

## President's Corner



**A Letter from  
Doug Carr**

My first year as President of the Board has been amazing and it has certainly gone by quickly. I have done my best to be at each of the dozen or so events that benefit the Foundation. These events have taken me far and wide,

from Saco for Mary's Walk, to Sugarloaf's Charity Summit, and South Portland for Tri for a Cure where I was in my kayak providing safety for swimmers! And that's just a few! At each stop I have been impressed with the dedication of committees and volunteers, the tireless efforts of staff and in particular Joanne Jordan, Manager of Special Events, and the commitment of participants (athletes) to make a difference in the fight against cancer.

With all our event success, our ability to award grants increased eighteen per cent this year. We are funding six research projects and nine education and patient support programs this year. The depth and breadth of our impact is significant. In fact, because of MCF two new cancer conferences will take place this year, one at Franklin Memorial Hospital, Farmington, and the other presented in Machias by Regional Medical Center of Lubec. Both will deliver education and updates for health care providers and the community at-large. The Foundation has also committed to providing one education session each year for both the Northern Maine Oncology Nurse Society and the Southern Maine Oncology Nurse Society.

We are pleased to welcome several new board members whose talent and time are welcome: Deb Gallant, Robin Whitten, and Kaye Flanagan. Also beginning a full three year term is Trudi Chase. A number of committees are in place. In addition, each event has a committee that depends on volunteers. Please talk with a board member or staff person to see how you can get more involved.

Another topic the Board is working on this year is diversifying income. While we have been extremely successful in generating income from special events, we are looking to implement a planned giving component that will provide donors with a lasting legacy. If

cont. p. 6

## Year in Review

“While previous grant recipients report outstanding results, Maine Cancer Foundation awards the largest number of research grants in its history...the result of a record-breaking fundraising year,” announced **Doug Carr**, President of the Board of Directors at the Foundation's Annual Meeting in June. While cancer continues to strike far too many, the Foundation's ability to fund the hope that research provides and the education and patient support that Maine people need today, is having an impact. “The people of Maine are responding to the Foundation message with determination and generosity, which is so critical for a public charity like MCF which depends on individual, corporate and organizations for support,” continued Mr. Carr.



Cancer survivors huddle just before the start of Tri for a Cure...see inside for more

The Foundation is fortunate to have a strong board of directors who maintain oversight and conduct planning. **Jerry Angier**, Chair of the Nominating Committee welcomed four new directors to the Board: **Robin Whitten**, founder of Audiophile, Portland and the vision behind the Pink Tulip Project; **Deborah Gallant** of D. Gallant Management, Portland; **Kaye Flanagan**, Manchester, a retired RN and current community volunteer, and **Dr. Trudi Chase**, oncologist with the Maine Center of Cancer Medicine in Brunswick. “With these new members, the Board of Directors numbers 22 and is well-positioned to guide the future growth of the organization,” Mr. Angier reported.

**Karen Rasmussen, Ph.D.** and chair of the Grants Committee reported receiving 13 research grant proposals, totaling \$1 million dollars. “The quality of research applications continues to improve, making the review process that more challenging,” Dr. Rasmussen said. Proposals are peer-reviewed by a panel of PhD's and MD's. With less than \$500,000 available, six grants were awarded totaling \$480,000 (in contrast to 2007 when 5 awards totaling \$366,000 were made). “The recipients rose to the top because their hypothesis was compelling, there was a history of achievement to increase the likelihood of success, and the outcome, if proved, would have a meaningful impact,” explained Dr. Rasmussen. “The field of research in

Maine is growing. It's vital that Maine Cancer Foundation exists so that scientists have a place to go for start-up funding. We are also seeing more translational research efforts, from bench to bedside, which is very exciting,” reports Dr. Rasmussen.



Eileen's Queens, Mary's Walk #1 Friends and Family team

As Grant Committee chair, Karen also oversees Education and Patient Support requests. In this area too, Maine Cancer Foundation is continuing to meet the needs of Maine people from Lubec to Farmington and places in between. “It's great to be able to help health care providers and others with cancer awareness, early detection, treatment and support initiatives in their own community. Everyone's resources are stretched thin, so

cont. p. 6

Research



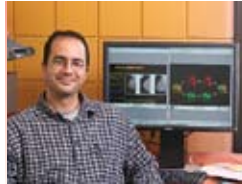
**\$81,995 Role of Delta Opioid Receptors in Bone Cancer**  
Edward Bilsky, Ph.D.  
University of New England, Biddeford

Bone cancer pain is one of the more common and challenging symptoms associated with advanced cancer. Current treatments for bone cancer pain are limited due to lack of efficacy, side effects and/or difficulty in administration. Previous work in the Bilsky laboratory provides a rationale for developing analgesics (pain relievers) that target the delta opioid receptor. The research funded by the Maine Cancer Foundation will investigate the activity and side-effect profile of novel drugs that activate this receptor in a mouse model of bone cancer, with the ultimate goal of having better analgesics for bone cancer patients (as well as other cancer-related pain conditions).



**\$79,524 Developmental Genomics of Lung Cancer**  
Carol Bult, Ph.D.  
Jackson Laboratory, Bar Harbor

Cancer is often associated with the inappropriate regulation of the same genes and pathways that are important for normal organ and tissue development. Our project will measure genome wide gene expression at thirteen stages of normal lung development in mouse and then compare these data to aberrantly expressed genes in human lung tumors. Our hypothesis is that using the comparative context of normal development will allow us to identify genes and pathways that are central to lung tumor initiation and survival. The results of our study will produce novel targets for future development of diagnostic and prognostic biomarkers for lung cancer.



**\$73,552 Wavelet-based Image Analysis of Mammograms**  
Andre Kahlil, Ph.D.  
University of Maine, Orono

The need to use reliable computer assisted diagnostic methods is becoming more and more crucial in mammography analysis. This is especially true in a state like Maine, and more generally in smaller hospitals, where there may only be one available radiologist to give a visual assessment of mammograms. We propose to offer a novel methodological approach to be eventually implemented into an automated breast cancer diagnosis assistant. Using the 2D Wavelet Transform Modulus Maxima (WTMM) method, the goal of this project is to determine the fractal dimension of microcalcification clusters and to eventually quantitatively discriminate between benign and malignant samples.



**\$79,696 Homologous Recombination Factor XRCC2 in B-Cell Genome Stability and Tumor Suppression**  
Kevin Mills, Ph.D.  
Jackson Laboratory, Ph.D.

According to estimates by the Maine Cancer Registry and the National Cancer Institute there are more than 700 new leukemia and lymphoma cases, and over 220 leukemia or lymphoma-related deaths, yearly in Maine. Chromosome abnormalities – such as broken chromosomes, rearrangements, and exchanges of material between different chromosomes – are hallmarks of leukemia and lymphoma. This project aims to identify and investigate the cellular processes that normally protect against cancer-related chromosome rearrangements. This work will be essential to 1) understand the origins of chromosome abnormalities and how they may lead to cancer; and 2) developing better diagnosis and/or treatment strategies.

**Maine Cancer Foundation  
Statement of Activities for Fiscal Year ending June 30, 2008**

	<u>Unrestricted</u>	<u>Temporarily Restricted</u>	<u>Permanently Restricted</u>	<u>Total</u>
<b>Public Support and Revenue</b>				
Gifts and Grants	\$325,431.00	–	–	\$325,431.00
Investment Income	(50,584.00)	–	–	(50,584.00)
Change in Value of Interest in Trust	–	–	(29,922.00)	(29,922.00)
Special Event Revenue	622,081.00	–	–	622,081.00
Misc. Reimbursements	549.00	–	–	549.00
Net Assets released from Restriction	\$7,861.00	\$(7,861.00)	–	–
<b>TOTAL</b>	<b>\$905,338.00</b>	<b>\$(7,861.00)</b>	<b>\$(29,922.00)</b>	<b>\$867,555.00</b>
<b>Expenses</b>				
Program Services	\$630,260.00	–	–	\$630,260.00
Management and General	87,475.00	–	–	\$87,475.00
Fundraising	211,008.00	–	–	\$211,008.00
<b>TOTAL</b>	<b>\$928,743.00</b>	<b>–</b>	<b>–</b>	<b>\$928,743.00</b>
<b>Change in Net Assets</b>	<b>\$(23,405.00)</b>	<b>\$(7,861.00)</b>	<b>\$(29,922.00)</b>	<b>\$(61,188.00)</b>
Net Assets - July 1, 2007	\$1,617,183.00	\$9,590.00	\$785,356.00	\$2,412,129.00
Net Assets - June 30, 2008	\$1,593,778.00	\$1,729.00	\$755,434.00	\$2,350,941.00

Maine Cancer Foundation completes a full Financial Audit each year. The 2008 Audit Report, prepared by Smith and Associates, CPAs of Yarmouth, is available to view at the Foundation office. Note: MCF is a beneficiary of a perpetual trust administered by a third party. The Foundation receives quarterly distributions reported as investment income which amounted to \$22,092 in this fiscal year. The pro-rata share of total trust assets is not available for expenditure by the Foundation.



**\$86,191 FGF-Mediated Tumor Growth induced by Notch Signaling Inhibition**

Igor Prudovsky, Ph.D.  
MMC Research Institute, Scarborough

Tumor increase depends on growth of vessels, which provide tumors with oxygen and nutrients. Fibroblast growth factors (FGF) are strong stimulators of vessel growth. Notch signaling system regulates cell fate at all stages of organism development. We found that Notch signaling inhibition, which can occur in some tumor types, results in the increase of production and secretion of FGF1. The aims of our project are to understand the role of FGF1 in tumor growth stimulated by the inhibition of Notch signaling and to assess the carcinogenic activity of gamma secretase inhibitors, potential anti-Alzheimer drugs, which block Notch signaling.



**\$78,413 Genetic Model of TGFb Receptor-dependant Suppression of Prostate Cancer Metastasis**

Cal Vary, Ph.D.  
MMC Research Institute, Scarborough

Prostate cancer metastatic disease is the primary cause of prostate cancer-associated mortality. We propose to develop a novel mouse model of prostate cancer metastasis that combines the ability to genetically manipulate the expression of components of the TGF signaling pathway in male mice that are genetically programmed to get metastatic prostate cancer. Patients with prostate cancer suffer a high rate of mortality because of metastatic disease. Our analysis of the signaling pathways involved in the regulation of prostate cancer metastasis will provide a rationale for the design of novel therapeutic approaches that can improve prostate cancer survival.

**Education and Patient Support**

Among the initiatives funded by Maine Cancer Foundation are two new cancer conferences, one in Machias and the other in Farmington. In York County cancer patients are being helped with transportation to their appointments. In Caribou a community-wide prostate awareness initiative is underway while Leukemia and Lymphoma patients across Maine are able to connect with one another for education and support.

**\$10,000 Regional Medical Center at Lubec**, to present a region-wide conference for patients, survivors, providers and the community  
*We're so excited to be able to offer this in our region. We are fairly remote from existing conferences and our cancer rates are above average, we need to act:* Tami Dinsmore, RMCL

**\$10,000 Connecting to Cancer Care, York County Community Action**, to meet the transportation needs of patients throughout York County  
*Economic strains are having a negative impact on cancer patients getting to appointments and treatment, with these resources we can remove this barrier, and help patients have the best outcome possible:* Connie Garber, transportation Director

**\$5,000 Franklin Memorial Hospital, Farmington**, to present a regional conference for cancer patients, survivors, and providers.  
*Recently Dr. Andrew Hertler of the Alford Cancer Center began seeing patients here in Farmington. We thought it was a great opportunity to*

*update the community as to what services are available, strategies for prevention and early diagnosis, as well as provide education for the staff:* Karen Rogers, RN, FCHN.

**\$5,000 Cancer Community Center, South Portland**, for patient and family support programs  
*The center continues to expand its programming while maintaining that all services be offered at no charge. It's vital that we receive grants like this to meet the needs of cancer patients and their loved ones:* Michele Johns, Ex. Dir.

**\$5,000 Cary Medical Center, Caribou** to support a community wide prostate cancer awareness initiative  
*Prostate cancer trails only lung cancer as a leading cancer diagnosis for men. There is a need to provide education and awareness to clear up the confusing messages that abound:* Bill Flagg, CMC

**\$3,140 SMCC Radiation Therapy Program, South Portland** to provide advanced education for RT students  
*SMCC provides the only RT Program in Maine. A regional RT conference is held each fall that provides students with education, preparation for the licensing exam and interaction with experienced therapists. For many, however, the expense of attending is prohibitive. This grant allows students to attend who would otherwise be unable:* Don Leaver, RT Program Dir., SMCC

**\$1,650 Leukemia and Lymphoma Society, state-wide** to provide telephone support services to patients  
*Patients with these cancers really benefit from small group guided support with other patients. Because Maine is so large, and patients may not be near each other, this grant allows for a facilitated telephone cancer support meeting:* Sharon Klein, Leukemia and Lymphoma Society

**\$1,500 Camp Sunshine, Casco** to provide a week at camp for one family affected by cancer  
*The strain and turmoil of a cancer diagnosis is even more acute when the patient is a child. To regain a family's sense of normalcy, to interact with others who know just what you're going through, all the while having fun, this is the mission of Camp Sunshine. Since no fees are charged to campers, this award pays the way for one family to attend:* Mike Katz, Camp Sunshine.

**\$1,200 Maine Breast Nurse Network, state-wide** to support conference planning and education for this start-up professional organization  
*The goal of MBNN is to enhance communication and networking among Maine nurses working in breast cancer care to share strategies for building a successful breast program, review advances in diagnosis and treatment of breast cancer, stay abreast of what is happening around the state in breast cancer practice, including survivorship and rehabilitation issues and develop care/education-related initiatives that will benefit patients and providers:* Linda Zeigler, RN

**Programs**

In addition, the Foundation underwrote the expense of Discovery Weekend whose final weekend was September '07; distributed Portraits of Courage books to patients, especially those newly diagnosed; in partnership with Maine Breast Health Cooperative supported the Blaine House Tea and Breast Health Leadership Award; in partnership with Maine Cancer Consortium supported exploring palliative care needs in Maine's immigrant communities.

### Array-based Comparative Genomic Hybridization of Circulating Tumor Cells in Breast Cancer Patients Before and During Treatment

Principal Investigator: Janet K. Bayleran, PhD  
Maine Institute for Human Genetics & Health

#### Final Report

The purpose of this pilot study was to determine the prognostic value of array Comparative Genomic Hybridization (aCGH) profiling of circulating tumor cells (CTCs) isolated from peripheral blood of breast cancer patients. Since we do not have access to a flow cytometry system capable of performing single cell sorting, we chose to use a manual approach to isolating CTCs from peripheral blood. We were unable to obtain anonymous blood specimens from breast cancer patients on which to test and optimize the manual method of CTC isolation. Instead, we worked with cultured breast cancer cells that we spiked into control whole blood specimens. The isolation of pure tumor cells from whole blood using a manual method has proven to be much more technically challenging than we had initially anticipated. We have tested three manual methods that promised "pure" tumor cells on four different cancer cell lines and have performed numerous spiking experiments to determine the sensitivity and specificity of the manual methods.

Despite numerous obstacles we have arrived at a procedure that produces pure tumor cells from peripheral blood. After initially testing two commercially available systems for CTC isolation that rely on centrifugation and membrane and liquid separation media, neither deemed suitable for tumor cell isolation a third protocol tested immunomagnetic isolation of tumor cells using antibody conjugated magnetic beads (Dynabeads®, Invitrogen). We worked extensively on optimizing the immunomagnetic bead isolation protocol. This has included: (1) extensive cell culture work, which we performed in a different laboratory across town; (2) performing RT-PCR assays for CD45, EpCAM and MUC1, which required optimization since the magnetic beads interfered with fluorescence; (3) determining the optimal conditions and number of washes required to reduce leukocyte carryover of CD45:bead complexes; (4) isolating tumor cells with magnetic beads containing antibody directed against EpCAM only; (5) spiking buffy coat rather than whole blood with antibodies; and (6) using a combined EpCAM/MUC1 antibody cocktail with Pan Mouse IgG beads (Dyna®<sup>®</sup>, Invitrogen) to more efficiently bind tumor cells.

In summary, the isolation of tumor cells from blood using a manual procedure took a much longer time than we had initially anticipated, both to find a protocol that could reasonably accomplish this and to then optimize the protocol to reduce leukocyte carryover into the tumor cell fraction. It was essential that optimization be complete prior to enrolling patients into the study since the CTC isolation protocol (involving downstream applications of WGA followed by aCGH) and the CTC enumeration protocol (by flow cytometry) require fresh cells. Thus, we needed to be poised to perform these protocols promptly upon receiving patient blood specimens. We have optimized a protocol that would suffice but that still requires a high number of tumor cells/7.5 ml blood. We planned to overcome this by enrolling only subjects with advanced stage breast cancer. While we are now in a position to enroll subjects and test this protocol on actual CTCs, we would need another 6-8 months to enroll subjects and obtain blood specimens from them at two time points to bring this project to completion. **We anticipate one peer-reviewed technical methods publication from this project and are currently preparing the manuscript.**

### Sprouty 4: a Possible Repressor of Id Protein Function in Breast Cancer

Principal Investigator: Robert Friesel, Ph.D.  
MMC Research Institute, Scarborough

#### Final Report:

This project explores the interaction of 2 proteins in breast cancer: one that has a stimulatory effect on cancer cells (Id) and one that seems to repress that activity (Sprouty 4). The Sprouty (Spry) proteins are a family of four related signaling molecules that have been implicated as tumor suppressors in breast cancer. The development of breast cancer is a multi-step process that involves gain- and loss-of-function mutations in components of cellular signaling pathways that result in increased cell survival and increased cell cycle progression. Tumor suppressor genes arrest cell proliferation and counteract cellular responses to activated oncogenes. There are four Spry genes in humans, Spry1, Spry2, Spry3, and Spry4. As a feedback inhibitor of receptor tyrosine kinase (RTK) signaling pathways, Spry expression is induced by the pathway that it regulates. A number of signaling proteins have been reported to bind Spry family members including Grb2, c-Cbl, Shp2, Raf1, B-Raf, caveolin, CIN85, Siah2, TESK1, GAP1, and PTP1B. However, thus far a consensus on a mechanism of action for Spry family members has not emerged. Spry2 expression in breast tissue fluctuates extensively in glandular and ductal structures during embryonic development, puberty, pregnancy, and lactation. In breast cancer, Spry1 and Spry2 are consistently down regulated by a mechanism that does not involve loss of heterozygosity or promoter hypermethylation. Several lines of evidence now support the notion that Spry proteins act as tumor suppressors.

*Two of the three goals of the proposal have been reached and one is ongoing.*

**AIM I.** The location of Id was determined within cancer cells in the presence and absence of Sprouty 4.

**AIM II.** An experimental system was established to reveal the effects of Sprouty4 on Id function. This has led to a set of experiments aimed at determining whether Sprouty4 may redirect cells from a proliferation pathway, which could have therapeutic potential in the future.

**AIM III.** The third goal is still under study: to determine which parts of the Id and Sprouty4 proteins physically interact. Experiments of this sort are useful for future drug targeting.

This MCF grant has enabled this laboratory to obtain new and novel information regarding the function of Spry4 in the possible regulation of Id protein function. Additional experiments are required before publication and will be supported by institutional funds. **We anticipate that a manuscript will result** from this support and will likely be submitted within the next twelve months. Importantly, this fund has allowed us to develop crucial preliminary data that will provide the basis for part of one specific aim of an **NIH grant to be submitted October 2008.**

### An N-Terminal Osteopontin (OPN) Fragment as a Novel Cancer Biomarker

Principal Investigator: Ah-Kau Ng,  
Ph.D, University of Southern Maine

#### Progress report, investigation extended to December, 08

**AIM I.** To develop an enzyme-linked immunosorbent assay (ELISA) to specifically detect and quantify the N-terminal fragment of OPN. We attempted to utilize a combination of our three monoclonal antibodies recognizing the N-terminal OPN fragment to generate a specific and

sensitive assay for this OPN fragment. Since there are 6 potential combinations for the pair of capture and detection antibody, we hope to have more than one assay for the N-terminal OPN fragment as well. The chessboard titration method was used in a 96-well plate for the optimization of the assay. Our initial testing demonstrated that the assay also detected full-length OPN (FL-OPN) in mixed samples of N-OPN and FL-OPN; however, any sample with less than 156 pg/ml of FL-OPN would not affect the N-OPN ELISA. The data also emphasize the importance of creating additional antibodies specific for N-OPN without cross reactivity with FLOPN.

**AIM II.** To produce new monoclonal antibodies specific for N-OPN. Hybridoma methodology have been used to develop new monoclonal antibodies specific for epitopes exposed or created in N-terminal OPN fragment and not reactive with the FL OPN. We anticipate that in the future, if OPN or its N-terminal form were to be indicated as a cancer biomarker used in clinical analysis, the highest utility would be obtained if there would be accuracy (and precision) in quantification of OPN levels. So far, we have not been able to obtain any monoclonal antibody specific only for an N-terminal OPN fragment epitope with no FLOPN cross-reactivity. Two new C-OPN specific monoclonal antibodies were obtained and are under further characterization.

**AIM III.** To compare in-house FL-OPN ELISA with commercial test kits. Three commercial ELISA for FL-OPN measurement were purchased: IBL kit, Assay Design Kit and Quantikine kit. In comparison with these commercial ELISAs, our assay had high accuracy in measuring FL-OPN standards, and high sensitivity. Because biologically, OPN is a complex molecule with diversity from alternative splicing, post-translational modification, extracellular proteolytic modification, and participation in protein complexes, we suggest that further development of assays capable of detecting OPN species are essential for future studies.

**A manuscript based on this work had been accepted for publication:** Development of fragment-specific osteopontin antibodies and ELISA for quantification in human metastatic breast cancer Alicia Plumer, Hongyi Duan, SriPriya Subramaniam, F. Lee Lucas, Susan Miesfeldt, Ah-Kau Ng, and Lucy Liaw, BMC Cancer.

### **RECQL4 Protein-Protein Interactions in Human Osteosarcoma Cell Lines**

Principal Investigator: Agasanur K. Prahalad, Ph.D.  
Maine Institute for Human Genetics and Health

*Mid-Year report, project extended through December 2008*

This research attempts to identify protein complex that contains RECQL4, a member of a family of human DNA helicases whose loss or gain-in-function is tightly associated with human disease and cancer. The specific objective of this research is to identify RECQL4 protein binding partners in the osteosarcoma cell lines using combination of proteomic technologies. Identification of RECQL4 interacting proteins will allow the identification of putative molecular pathways for better understanding of the role of RECQL4 in bone biology and osteosarcoma development. In the first few months cell culturing work has been initiated and necessary proteomics supplies and reagents required for this project were ordered; surface enhanced laser desorption time-of-flight mass spectrometer was set up for protein profiling and protein-protein interactive discovery mapping studies using different protein chip arrays; U2OS and SaOS-2 human osteosarcoma cell lines (ATCC, Rockville, MD) are being grown to get enough total protein cell lysates for enriching RECQL4 protein binding partners using different co-immunoprecipitation strategies.

RECQL4 expressions in U2OS and SaOS-2 with western analysis using

polyclonal anti-RECQL4 antibody have been shown. Whether this polyclonal antibody works in our Co-Immunoprecipitation (Co-IP) experiments is now being shown. As a negative control, we are growing AG18371A fibroblasts derived from Rothmund-Thomson syndrome (RTS) patient. Co-immunoprecipitation (Co-IP) experiments using commercially available polyclonal anti-RECQL4 antibody have been initiated. Two approaches for optimization of IP experiments to remedy anti-RECQL4 antibody interference within IP samples are being followed. In the first approach (direct strategy), anti-RECQL4 antibody is immobilized directly to a high-capacity aldehyde-activated beaded agarose support (AminoLink Plus Coupling Gel). Using direct method as an antibody-coupling strategy would deliver IP results free from antibody interference. The second approach (indirect strategy), we will take advantage of the traditional immobilized Protein A-or Protein G-based support combined with chemical cross-linking to covalently link the anti-RECQL4 antibody to the support. Both approaches should ensure RECQL4 co-immunoprecipitate samples free of IgG antibody interference. Additional experiments are underway for on-chip immunocapture of RECQL4 and other associated proteins among different cell lines (i.e. SAOS-2 and U2OS), and their detection using SELDI-TOF mass spectrometry. Experiments with series of protein dilution from total cell lysates are in progress to determine the sensitivity for detection of RECQL4 and its associated proteins.

### **The Role of Twist Dimers in Mammary Tumor Metastasis**

Principal Investigator: Doug Spicer, Ph.D.  
Maine Medical Center Research Institute

*Progress Report, study extended through October*

We have been studying the regulation of cell behavior by the basic-Helix-Loop-Helix (bHLH) transcription factor Twist1. Twist1 is expressed in many different tumor types and is generally associated with more advanced tumor phenotypes and tumor metastasis. We recently found that the activity of Twist1 depends on the complexes that it forms. Twist1 can interact with itself to form Twist/Twist homodimers (T/T), as well as interact with ubiquitous bHLH E proteins to form T/E heterodimers (T/E). The relative levels of Twist1 and the negative HLH protein Id determine the ratio of T/T to T/E. Id competes with Twist1 for dimerization with E proteins, and when Id levels are higher than Twist1, Twist1 is forced to form T/T dimers. Id is also expressed in many tumors and therefore we had proposed that T/T dimers would form in these tumors and drive metastasis. Indeed, we found that the T/T and T/E complexes had opposing effects on tumor progression. Twist1 homodimers (T/T) are able to drive metastasis in a normally non-metastatic tumor, whereas Twist1 heterodimers (T/E) can inhibit metastasis in a normally very aggressive tumor. Therefore, we propose that T/T is a driver of metastasis, and this is counter balanced by T/E, which inhibits metastasis.

**Progress in Aim 1.** We intend to use a procedure known subtractive immunization, a technique that facilitates efforts to produce monoclonal antibodies specific for antigens that are present in low abundance in proteins that are similar in sequence or structure. The use of this approach should greatly enhance our chances of generating useful T/T-specific antibodies. As a second part of this Aim, we have obtained 45 human mammary tumor samples from the Maine Medical Center Tissue Bank, as well as 45 control samples. The tumor samples are primarily from cases with advanced tumor phenotypes, and will be used to screen with our T/T-specific antibodies.

**Progress in Aim 2.** We are currently working on conditions where we can obtain sufficient quantities of the proteins that interact with the Twist1 dimers so that we will be able to identify them by mass spectrometry. We are now working on identifying the optimal conditions to identify the interacting proteins.

## President's Corner, cont. from p.1

you have an interest in estate planning and would like to help we'd enjoy hearing from you.

As you read this Report, we invite your feedback. Just e-mail [info@mainecancer.org](mailto:info@mainecancer.org) or phone Susan Rowan, Executive Director, at 773-2533 with your comment, suggestion or question. By the way this is Susan's 10th year at the Foundation, a significant tenure that has provided growth and stability for the Foundation.

Thank you again for your support and the promise it holds for a future free of cancer.

## Year in Review, cont. from p.1

to have this additional funding means a great deal," agreed grant committee members **Katherine Pope, M.D., Ron Bennett, and Jerry Angier.**

## Awards and Recognition

"The Annual Meeting is a wonderful time to recognize volunteers who have been particularly helpful in the past year," explained Susan Rowan, Executive Director. "MCF continues to have a small paid staff, so the help of these volunteers is very important to our success and greatly appreciated," she added.

Recognized for achievement in 2007-2008 are:

**Connie Ekowicki** – a young working wife and mother with family members touched by cancer, Connie helps get out hundreds of thank you letters each month. **Heather Huntley-Rumery**– nearly ten years ago after losing a dear friend to cancer, organized a



Beth Shissler and Mellissa Perrin of Sea Bags are presented with a Recognition Award for their sale of specialty bags that raised \$15,000 for the Foundation. Left to Right: Beth Shissler, Joanne Jordan, Special Events Manager, Hannah Kubiak, Julie Marchese, Board Member

fundraising dance, one that has continued each year since. Sea Bags' **Beth Shissler and Hannah Kubiak** – with both of their Moms experiencing breast cancer, Beth and Hannah

felt compelled to make a difference. Makers of unique tote bags made from recycled sails, Sea Bags created a limited edition pink ribbon bag donating a percent of proceeds to MCF. \$15,000 was raised, an effort they are repeating this year.

**Jean Todd** was noted for her dedication and help growing Pink Tulips Project while Downeast Magazine was thanked for their tremendous, full color spread in the March edition. **Rich Robinov** of Paradigm Windows, presenting sponsor of the annual Sea Dogs Mother's Day 5k was thanked. Sea Dogs 5k event benefits MCF's Women's



A cheerful Erlene LeBorge, this year's Founders Award winner, with bouquets at Tri for a Cure

Cancer Fund. In addition, Paradigm Windows is the lead in-kind donor for the Cure On-Line Auction. Saco Public Works Department was saluted for their tremendous efforts to insure the safety and success of the annual Mary's Walk & Kerrymen Pub Road Race. Held in mid-March, Public Works team has gone above and beyond to make sure the sidewalks and streets are clear.

Maine Cancer Foundation annually presents two awards. The 2008 Founders Award for exceptional volunteerism was awarded to **Erlene LeBorge**. Erlene works tirelessly to assure the success of special events, from creating beautiful websites, to serving on committees and offering her sage advice. Erlene is the proprietor of Rosemont Floral in Portland.

2008 Carroll Award for extraordinary efforts to advance the path to a cancer free future was presented in two categories; Professional and Volunteer.

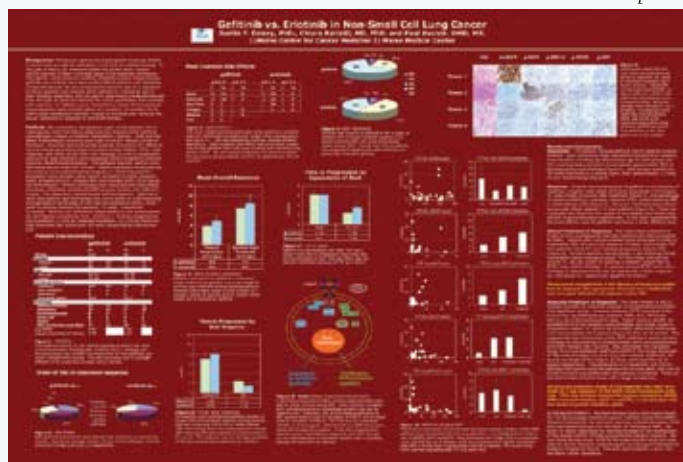
**Stuart Gilbert, M.D.**, received the award upon his retirement from a long and valued career as a Radiation Oncologist. Dr. Gilbert is much loved by his patients

and always went above and beyond to instill extraordinary quality of care in his practice. There is no better role model for the next generation of Radiation Oncologists.

**Gene Libby and Jane Kerry** of Saco, were presented with a Carroll Award for the outstanding success of Mary's Walk and the Kerrymen Pub Road Race. 2008 was the 10th year of the event and marked the cumulative \$1 million raised for cancer research in Maine. The event is named in honor of Mary Kerry Libby, Gene's wife and Jane's sister-in-law, who died of Burkitt's lymphoma, a rare cancer, at age 44. Mary left behind 4 children and a wide community of friends and family who deeply mourned her untimely passing. Mary's Walk was created as a way to turn their sorrow into something good and it certainly has! Nearly 3,000 people participated in 2008, many with their own cancer stories, raising over \$200,000.

Guest Speaker **Ivette Emery, Ph.D.** showed the audience what a tremendous impact one MCF grant can have. A grant recipient in 2006, Dr. Emery along with co-investigator **Chiara Batelli, M.D. PhD**, sought to answer the question - which lung cancer patients will benefit from the drug Iressa and which will not? The data obtained was very informative and intriguing. A poster was presented at the Northern New England Oncology Society where it was very well received (see picture below). "Our goal is to make personalized oncology a reality... that is, using the molecular defects in individual tumors to guide the selection of the best treatment, said Dr. Emery." The Maine Cancer Foundation was instrumental in spearheading this research program, the first in its type here in Maine, by providing this first grant. Drs. Emery and Batelli were tapped for a national award, which led to additional support from new fund sources that will assure the continuance of their investigation.

NNEOS poster





**Kerryman Pub  
4 Mile Road Race**

Walk reached a remarkable \$1 million! What began as a way to recognize the gift of life that Mary shared with friends, family and



Walkers fill Main Street, Saco

**M**ary's Walk is truly making a difference in funding Maine-based cancer research. Now in its 10th year, the 2008 event broke all records with an increase in participants (over 2500), fundraising and sponsorship. With this year's contribution, the ten-year total of funds raised at Mary's Walk reached a remarkable \$1 million! What began as a way to recognize the gift of life that Mary shared with friends, family and community has now evolved into a community event where people come to honor and remember friends and family they have lost and to encourage and support those dealing with cancer. "It's grown to be much more than we ever imagined," said Jane Kerry.

Top Individual fundraiser, Alisa Kelley, of South Portland chose to

raise money for Mary's Walk because of many friends and family who have faced cancer throughout the years. Some lost their battle, some have beaten cancer, and others are courageously fighting today. "100% of funds raised for the Maine Cancer Foundation remain in Maine, which is a key point when I ask people for donations," said Alisa.



Susan Rowan, Ex. Dir. Doug Carr, Board President, accept a Mary's Walk donation from chairs Gene Libby and Jane Kerry

"It is our hope that the spirit of caring and support generated by Mary's Walk will help families now battling cancer in some small way. For as long as people continue to care about their loved ones dealing with cancer and until there is a defined cure for this disease, Mary's Walk will continue to grow and benefit families and friends throughout Maine. We'll see you again on Sunday, March 15, 2009!" Gene Libby said.



by Sugarloaf, the mountain offers a beautiful setting, top notch staff support and regional promotion. There is something for everyone on Saturday beginning with the on-mountain race where sponsored skiers vie for awards.

During the afternoon the community bids on a wide array of donated silent auction items. Later that evening the King Pine Room is transformed into a Charity Ball with an always entertaining Live Auction. "This event is a great opportunity to showcase Maine Cancer Foundation while helping the local breast care program continue its mission to provide services at no charge to women in

**S**ugarloaf Charity Summit helps Maine Cancer Foundation expand its reach along with its ability to advance cancer research in Maine. Maine Cancer Foundation along with the Martha B. Webber Breast Care Center at Franklin Memorial Hospital equally share the proceeds of this 2-day winter event. Hosted

need throughout the region," said former MCF Board President, Meredith Strang Burgess, a Sugarloaf integral to the events success. The Charity Summit raised \$92,000 for the Foundation. NOTE: In April, Franklin Community Health Network Memorial



Hospital applied for and received a Maine Cancer Foundation grant to present a new Cancer Conference. The event will be Friday, October 3. The conference for patients, providers and the community

at-large will offer prevention and early detection strategies, an update on treatment and services as well as comfort and strength. [www.fchn.org](http://www.fchn.org)



1/3 mile ocean swim, 12 mile bike, and a 3 mile run. The majority of women were competing in their first triathlon. The event offered options for a duathlon which replaces the swim with a 1.5 mile run, or forming a relay team to do the race.

**M**aine Cancer Foundation's 1<sup>st</sup> Annual Tri for a Cure took place August 9<sup>th</sup> on the beautiful campus of Southern Maine Community College in South Portland. The event filled to maximum capacity in eight weeks with 550 registered athletes and was supported by 300 volunteers. 450 athletes remained on the wait list. Athletes participated in a

an overwhelming feeling of camaraderie throughout the entire process, from the committee dedication, sponsors support, athlete commitment, outstanding volunteers and spectator turnout" Abby Bliss, race co-chair agreed. "Every aspect was more than we expected, the sponsors kept asking what else they could do for us, the committee gave great ideas, and the participants raised an amazing amount of money to support Maine Cancer Foundation."



Julie Marchese, founder of Tri for a Cure with her daughter Lauren who competed in the event.



Photo by Susan Gatti

"What an honor to be part of an event that was life changing to so many women" states Julie Marchese, founder and race co-director. "It was

The original fundraising goal for the 1<sup>st</sup> Tri for a Cure was \$30,000. After all the results are tallied the net fundraising total will exceed \$200,000! Plans are already underway for the 2009 event. For more information about this event you can visit [www.mainetriforacure.org](http://www.mainetriforacure.org).

**BOARD OF DIRECTORS  
2008-2009**

Douglas S. Carr, Esq.  
Perkins Thompson  
*President*

Cheryl Greaney  
UNUM  
*Vice President*

Julie Jordan Marchese  
*Vice President*

Roger Poulin, CPA  
Baker Newman Noyes  
*Treasurer*

Jerry Angier  
J. Angier and Associates

LuAnn Ballesteros  
Jackson Lab

Ronald Bennett, CPA  
Albin Randall & Bennett

Kim Block  
WGME 13

Trudi Chase, MD  
MCCM Brunswick

Laura Davis  
Rinck Advertising

Stephen Eddy  
Scarborough

Kaye Flanagan  
Manchester

Roger Inhorn, MD  
Mercy Hospital

Gene Libby, Esq.  
Libby O'Brien Kingsley

David Mitchell  
Smith Barney

Katherine S. Pope, MD  
Spectrum Medical Group

Karen Rasmussen, PhD  
MCCM Scarborough

Gordon Smith, Esq.  
Maine Medical Association

Robin Whitten  
Audiophile Magazine

Jeff Young, MD  
Spectrum Medical

**Event Highlights**



In May 30,000 pink tulips bloomed in 48 public garden sites across Maine, from York to Houlton and from Greenville to Belfast. In the project's second year, the project grew from 3 cities to 13 counties. Volunteers planted pink tulip gardens with bulbs supplied by the project and solicited donations in honor of people touched by breast cancer



*Pink tulips being planted in Belfast*

or in support of the project's goals of awareness and funding of research for women's cancer in

Maine. In 2007 the Pink Tulip Project raised over \$50,000 for Maine Cancer Foundation, far exceeding expectations. Many gardens celebrated the blooms in May with a gathering to thank donors or welcome a gathering of survivors.

"We are so excited to have reached so many communities in Maine with the Pink Tulip Project gardens." Robin Whitten the project founder reports. "The communities decide how to make the project succeed. Creativity of scope and participation is encouraged. From tulips around the town green's flagpole to 100 blooms in a formal planting bed, the Pink Tulip Project



*Pink Tulip founder Robin Whitten with Lewiston school children celebrating May's bloom*

encourages each community to have a unique garden to raise awareness and raise funds."

The project is able to reach people in all areas of the state. The combination of raising funds for research and beautifying communities is appealing to many service groups, schools, and medical facilities as well as the general public. To learn more about the project or support one of the gardens near you, visit [www.pinktulipproject.org](http://www.pinktulipproject.org).



The 6<sup>th</sup> annual Cure Breast Cancer for ME event returned to its original luncheon format and sold out in record time. "I am so

glad to be back to our roots as a luncheon," states Meredith Burgess the event founder. "It provides the intimate setting that makes this event so



popular amongst our survivor community."

"The day is filled with the good news as well as the reality of breast cancer,"

said Ms. Burgess. "We celebrated the survivor stories of Jeff Regis, Anne Palmer, and Laurie Ellis while remembering those we lost over the last year. We could never do this without a strong group of sponsors, volunteers and committee members."

As is our tradition, we focused the spotlight on people who have made significant contributions in the many areas of breast cancer research, education and support.

- ✿ Grassroots Advocacy Award ~ Bonnie Holding, Volunteer with Casting for Recovery
- ✿ Medical Care and Research Award ~ Celine Godin

MD, Spectrum Medical Group

- ✿ Outreach and Education Award ~ Dr. Greg D'Augustine and Kathryn Varney, CMMC
- ✿ Meredith Burgess Spirit of Life Award ~ Meg Wolff, Survivor and author of "Becoming Whole"

The luncheon was concluded with a beautiful performance by Portland Ballet. This is an event that touches many lives of the newly diagnosed. In the 6<sup>th</sup> year of the project we raised just over \$106,000. The funds were raised by a combination of sponsorship, ticket sales, and the month long online auction.

The 7<sup>th</sup> Annual Luncheon will be held at the Holiday Inn by the Bay in Portland



*Kim Block and Meredith Strang Burgess with Meg Wolff who received the 2007 Spirit of Life Award*

on October 1st. Tickets can be purchased online at [www.curebreastcancerforme.org](http://www.curebreastcancerforme.org) or by calling Maine Cancer Foundation. We are currently recruiting members to serve on the Cure Breast Cancer Planning committee. If you would like to join us in the planning of the 2009 Cure Luncheon or to donate an auction item please contact Joanne at Maine Cancer Foundation 773-2533.



## Event Highlights

Several additional events occur during the year to benefit Maine Cancer Foundation. We are deeply grateful for this ongoing support and the important revenue it generates.

In Mid-July the 2007 **Betty Blakeman Memorial Tennis Tournament**. Maine's premier amateur tennis tournament once again drew a large field of players. Courts in surrounding towns were put into play. Sunday afternoon's finals at Yarmouth High School courts were exciting and well attended. Sponsorship and registration combined to raise \$12,000. The 10th and last **Golf Classic** was held in August at the Woodlands. The day was sparkling which made for great golf. Afterwards, the crowd enjoyed happy hour and a bbq dinner while bidding on live auction items. It raised \$17,500 and has been replaced by Tri for a Cure. September 30, the 1st Annual **Rotary Car Cruise for Cancer** was presented by the Rotary Clubs of South Portland/Cape Elizabeth and Portland. A car rally of sorts with clues to solve and contests to perform raised \$7,500 and was a lot of

fun. The 2008 version is a bicycle event, the Rotary Bicycle for a Cure...similar concept, family friendly and green! Sept. 28, 2:00 – 5:00 p.m., South Portland. The October **Saco Bay Physical Therapy 5k** brought out runners and walkers who enjoyed the 4:00 p.m. Saturday race time. The Saco run/walk was well-organized with plenty of SBPT staff and volunteers on hand. A post-race party with tremendous hearty hors d'ouerves was enjoyed by all. \$9,000 was donated to MCF. The 2008 event is Saturday, Sept. 27, for registration information, [www.sacobaypt.com](http://www.sacobaypt.com)

Also in October our friends at WJBQ's Morning Show once again held the **Q's Cans for a Cure**, perhaps the worlds largest recycling effort. Meredith, Jeff and Lori camped out at the Maine Mall for 3 days until they raised their goal of \$12,000 which was shared with the Cancer Community Center. On Halloween Weekend our friends at Shipyard at Sunday River organized **Hike the River for a Cure**. Despite chilly and overcast skies a dedicated group turned out to hike. They were rewarded with well-deserved

hospitality. Hike raised nearly \$6,000. In the spring, the Foundation was beneficiary of two events on the same weekend. On Saturday, May 10, the 4th annual **Remembering Tom Rowe Concert** took place at the Franco-American Heritage Center, Lewiston. A fantastic line-up of talented musicians donated their time and talent to help raise \$7,200. The next morning, the **Sea Dogs Mother's Day 5k** presented by Paradigm Windows had a huge turnout with over 1,000 racers. This event raised \$17,500 for MCF's Women's Cancer Fund. Also in October **McDonald's** restaurants throughout Maine had a breast cancer awareness campaign and fundraiser that raised \$23,800.

Thanks also to Loni Graiver, Brian Thill, Mt. Abrams Ski Club, Toast off the Coast/ Medical Case Management Group, Dick Hilton, BIW Head Shavers, Barbara and Jennifer Nelson, Pine Tree Quilters, York Hospital Breast Cancer Support Group and the Kennebunk-Kennebunkport Chamber of Commerce Fashion Show for your efforts raising funds for MCF!

## Look Ahead and Give Back

You can make a gift that leaves a lasting personal legacy of support for cancer research, education and patient support in Maine. While much is being done to advance the path to a cancer free future, unlocking the mysteries of this disease will take continued effort. Oncology physicians, nurses and others will need the latest up-to-date information and patients will need education and support in their own communities. Whether you

are considering adding Maine Cancer Foundation to your will, establishing an income producing charitable gift annuity or charitable remainder trust, or naming MCF as the remainder beneficiary of your IRA or other retirement plan, we're here to help. If you believe that we will continue to make a difference long into the future, your planned giving support can do the same. For more information contact [susan@mainecancer.org](mailto:susan@mainecancer.org), or phone 207 773-2533.

## Extreme Office Makeover

The Foundation's Executive Director would like to thank Warren's Office Supplies of Springvale, Maine who sponsored a contest to win a \$10,000 office makeover. Susan applied referring to the fact that "as a charity trying to find the cure to cancer, we spend very little on office furniture. Most of what we have is hand me down or deeply discounted." This resonated with the Roberts Family, owners, who had lost a loved one to cancer several months before. All new furniture was delivered and set-up along with chairs, bulletin boards, file cabinets, a new computer monitor, color printer, shredder, and oodles of office supplies. It was just in time too, now a 4<sup>th</sup> workstation could be set up with furniture from the previous office. "It's a delight to have such a nice environment to work in," said Susan. "Warren Roberts and his crew did an amazing and very generous thing for which I'm very grateful." Visit Warren's at [www.WarrensOfficeSupplies.com](http://www.WarrensOfficeSupplies.com)



## Breast Cancer License Plate

The new Breast Cancer license plate is available at Department of Motor Vehicle offices beginning October 1. The plate will support breast cancer education, awareness and research provided by three Maine-based organizations: Maine Cancer Foundation, Maine Breast and Cervical Health Program, Maine Breast Cancer Coalition while reminding us that early detection saves lives. Thank you to everyone who participated in the drive to collect signatures - you made it happen!



## Merchants Support MCF

First there was **Sea Bags** who create and sell a limited edition pink ribbon bag donating proceeds to Maine Cancer Foundation, [www.seabags.com](http://www.seabags.com). Now there is **ToeGoz**, [www.toegoz.com](http://www.toegoz.com), the maker of great looking flip flops, donating a percent of sales to MCF; **Ann Veronica** is doing the same with a signature bag, [www.annveronica.com](http://www.annveronica.com); **Legacy Properties Sotheby's International Maine** whose brokers are honoring the memory of founder Bud Singer, with a donation to MCF at each closing. [www.legacysir.com](http://www.legacysir.com). Other partnerships are under consideration. Interested? Call us!

## TRIBUTE GIFTS

### In Memory of ~

*Memorial Gifts commemorate a loved one, neighbor or colleague who has passed away. Families often choose to support cancer research in lieu of flowers when faced with the loss of a loved one. We appreciate this kindness and extend our sincere sympathy. Annual Donors too, will often remember their loved one when making a gift each year. Memorial Gifts were received in the name of these individuals between July 1, 2007 and June 30, 2008:*

Benjamin Alfiero  
Stanley Anderson  
Charles Asselyn  
Richard Baisley  
Otis Barry  
Jean Battista  
Margaret Beaulieu  
Reed Bell  
Robert Bennett  
Lucy Marie Bortell  
Claudette Bossie  
Renald Boudreau  
Jill York Bowen  
James Bowes  
Robert Brainerd, Sr.  
Charles Brown  
Hazel Brown  
Barbara Buiniskas  
Albert Bunker  
Betty Burnett  
Alasco V. Carey, Sr.  
Donna Carlin  
Ethel Carlson  
Mary Carson  
Lori Cates  
Dorothy Clarke  
David Cook  
Willard and Joella Cormier  
Laurice Cote  
Roy Crabtree  
Jeanne Cram  
Robert Crockett  
C.J. Crooks  
Richard Dalton  
Edith Damon  
Dana Danforth  
Nancy Darling  
Honorable Thomas E. Delahanty  
Theresa Dumond  
Mary Dennis  
Frances Dickson  
Valerie DiFiore  
Paul Don  
James A. Dowling  
Norma Duguay  
Charlotte Dumond  
Harold and Emily Dyer  
Valorus Edgcomb

Virginia Edwards  
Maynard Eugley  
Louise Fairfield  
Joanne FanTucchio  
Deborah Farnsworth  
Linda Faulkner  
Terry Felser  
Arlene Fletcher  
Albert Frost  
Susan Garrett  
William D Geoghegan II  
Josephine Giroux  
Mary Glaude  
Carole Darling Goodman  
Donald Goddard  
Betty Gorton-Chase  
Maurice Goulet  
John Alden Grace  
David Graiver  
Patricia Griffin  
Joseph Guite  
Betty Ann Cox Hanscom  
Joanne Hardy  
Bette Hess  
William K. Hobbs  
Constance Harford  
Elizabeth Harvey  
Sgt. Jack E. Haubois, Jr.  
John Hayes  
Irene Hoak  
Evelyn Holt  
Rodney Hunt  
Louise James  
Charlotte Ann Johnson  
Nancy Johnson  
Pauline Johnson  
Earl Edwin Jones  
John Joyce  
Carrie Keniston  
Eleanor Kennedy  
William Kennedy  
Diana Kent  
Fr. Paul Kerns  
Deborah Lombard Knecht  
Frances Knight  
Ralph Kodis  
Rosalind Kodis  
Sidney Kodis  
George Liming  
Mrs. Viola Lothrop  
Dana MacDonald  
Claire Madore  
Leann Marks  
Gail Marshall  
Constance Martel  
Ann Mason-Osann  
Richard Mattuchio  
Mary Clota McAllister  
Frederick McGonagle  
Newell 'Sonny' McLain  
Diane Metcalf  
Danny Michaud

Jeannette Michaud  
David E. Mills  
William Mitchell  
Grace Morse  
Nancy Morton  
Lois Murphy  
Sandra Dee Savage Murphy  
Philip Nadeau  
Margaret Newton  
Anne Nicholes  
Richard Nichols  
Eli Norbert  
Ronald K. Olsen  
Tory O'Reilly  
Robert Paradise  
Ralph William Peaslee  
Silas Peaslee, Jr.  
Doris Perkins  
Nancy Perreault  
Becky Philbrick  
Louise Philbrook  
Thomas T. Phillips  
Sharon Boutet Pierotti  
Eugene Piper  
Ernie Plourde  
Angelo Polito  
Arthur Pooler  
George Potter  
Mary Pride  
Kenneth Pullen  
Charlotte Ramsdell  
Keith Records  
Robert H. Riefe  
John Riel, Jr.  
Ann Rooney  
Carol Rumery  
Diane Sardano  
Monique Saucier  
William Savage  
Joseph Sawyer  
Nancy Sawyer  
Vivian Sawyer  
Douglas Scott  
Marjorie Scott  
Patricia Searcy  
Chris Seitz MD  
Virginia Shafter  
Shirley Shaw  
Timothy Shaw  
Roger & Tina Sherman  
Lynne Smith  
Rita Stevens  
Gary Stilphen  
Mary B. Strang  
Ziona Straub  
Norman Stuart  
Patricia Swanson  
Dale Sweet  
James Taft  
Jean Taylor  
Theresa Thibeault  
Max Thomas

Elizabeth Tilley  
Jim Tomney  
Winfield and Phyllis Twombly  
Jon Van Kammen  
Mary Ventresca  
Carol Watts  
Elaine G. Webster  
Harold Whitmore  
Maurice Wilson  
Theodore Wilson  
Ethel "Betty" Wingrove  
Catherine Winship  
Raymond Wolf  
Carolyn Young

### In Honor of ~

*Honor gifts to Maine Cancer Foundation pay tribute to a special person or event such as a birthday, anniversary, holiday or other celebration. Honor gifts were received in the names of the following individuals between June 30, 2007 and July 1, 2008:*

Ms. Zareen Taj Mirza's parents  
York High School community and those that face cancer  
Ronald Carroll, M.D.  
Mr. Matt Crane  
Mr. Daniel Creighton  
Dr. John H. Dorsey, Jr.  
Ms. Beth Findlen  
Ms. Susan Gallo  
Mr. David Graiver  
Ms. Bev Griffin  
Ms. Geraldine Guilbault  
Mr. Clayton Hoak  
Mr. and Mrs. Robert Johnson  
Ms. Sherry Keene  
Kidder Frewin Wedding  
Ms. Barbara V. LaRoche  
Mr. Brian Locke  
Mr. and Mrs. David Marchese's Anniversary  
Mr. Bradford Payne, Sr.  
Ms. Hanna Powell  
Mr. and Mrs. Jerry Robinov's 50th Wedding Anniversary  
Ms. Laura Sereyko  
Rev. C. Richard Sheesley  
Ms. Meredith Strang Burgess  
Ms. Judith Tamarro  
Mr. Paul Tully  
Ms. Barbara Turitz  
Ms. Bonnie Twitchell  
Mr. Sydney Woodbury

## GIFTS

*We gratefully acknowledge the kindness of these donors who made gifts to MCF between July 1, 2007 and June 30, 2008*

### **1976 Club ~ \$5,000 and up**

Mr. and Mrs. Harry Konkel  
The Estate of Frederick Morong  
Spicewood Fund/Maine  
Community Foundation:  
Katherine Pope, M.D. and  
Christopher Harte

### **Society of Hope ~ \$2,500 to \$4,999**

Mr. and Mrs. David Marchese  
Ronnie Sellers Productions

### **2nd Century Club ~ \$1,000 to \$2,499**

Ms. Jill Berry Bowen, RN  
Ms. Maddy Corson  
Mr. Arthur Dickson, Jr.  
David Graiver's Birthday  
Celebration  
Ms. Cheryl Greaney and Ms.  
Maureen Keeley  
Dr. and Mrs. J. Hanneman  
Ms. Heather Huntley-Rumery's  
Dance  
Ms. Susan Konkel  
Mr. Gene Libby  
Mr. David Mitchell  
Ms. Meredith Strang Burgess  
Ms. Zareen Taj Mirza  
Mr. and Mrs. Rob Whitten  
Bath Iron Works Head Shaver  
Buonanimo Fund/Maine  
Community Foundation: Mr.  
and Mrs. Fletcher Brown  
John M. Robinson Fund/Maine  
Community Foundation: Ms.  
Cornelia Robinson,  
United Way of Central and Western  
CT

### **Carroll Society ~ \$500 to \$999**

Mr. and Mrs. Jerry Angier  
Drs. Frederick and Jennifer  
Aronson  
Mr. and Mrs. Doug Carr  
Mrs. Elizabeth L. Davis  
Ms. Nancy Fox  
Mr. and Mrs. Jack Gibson  
Mr. and Mrs. John Godsoe  
Ms. Ann Groves Manson  
Roger Inhorn, MD and Ms. Victoria  
Masakowski  
Mr. and Mrs. Dennis Payson  
Mrs. Louise M. Royall  
Mr. and Mrs. William Stangle  
Mrs. Charlene Strang  
Brian Thill's Marathon Run  
Mr. and Mrs. Rich Wallower

Mr. Peter Webster  
Ms. Jane Costello Wellehan  
Lloyd's Inc.

### **Promise Club ~ \$250 to \$499**

Mr. and Mrs. Ross C. Babcock  
Christmas Celebration in Memory  
of Reed Bell  
Mr. and Mrs. Ronald Bennett  
Ms. Lynne Capozzi  
Dr. and Mrs. Ronald Carroll  
Mr. and Mrs. Maurice Cohen  
Mr. and Mrs. James Colongeli  
Mr. Wayne Cote  
Mr. Michael Currie  
Finley Associates  
Dr. and Mrs. Daniel Hayes  
Ms. Joanne Jordan  
Mr. Thomas McNulty  
Mrs. Lucia Michaud  
Mr. and Mrs. Eric Murphy  
Mrs. Dorothy Nichols  
Mr. and Mrs. Daniel Redmond  
Ms. Heather Remick  
Mr. and Mrs. Alan Saabye  
Mr. and Mrs. Ron Schroeder  
Bio-Engineered Supplements  
Dick Hilton's Golf Tournament  
McTeague, Higbee, Case, Cohen  
Medical Mutual Insurance  
Company  
Mt. Abram Ski Club Fundraiser  
Western Maine Board of Realtors

### **Courage Circle ~ \$100 to \$249**

Capt. and Mrs. William Abbott  
Mr. Alfred Adams  
Mr. G. Raymond Ahrens  
Mr. and Mrs. Jim and Melissa Allen  
Mr. John Amory  
Ms. Lisa Arsenault  
Mrs. Josephine Atlass  
Mr. and Mrs. Peter Bingham  
Mr. and Mrs. Bob Bizier  
Ms. Joyce Black  
Mr. and Mrs. George Bonnevie, III  
Mr. and Mrs. Weston L. Bonney  
Mr. and Mrs. Nathan Brackett  
Mr. and Mrs. George Brett  
The Britton Family  
Ms. Marion Flint Brooks  
Mr. Jerome Bruni  
Ms. Sandra Bruns  
Mr. and Mrs. Vance Bunker  
Ms. Meredith Strang Burgess  
Ms. Susan Burgess  
Ms. Sherry Carll  
Ms. Patricia Clark  
Ms. Laura Connolly  
Mrs. Geraldine Coombs  
Mr. Eric Curtis  
Mr. Charles Cushing

Mr. and Mrs. Richard B. Dalbeck  
Mr. and Mrs. Steven D'Amato  
Ms. Josephine Detmer  
Mr. Peter DeTroy  
Dr. and Mrs. Albert Dibbins  
Mr. and Mrs. Henry Dobek  
Mr. Robert F. Doble  
Mr. and Mrs. Gerald Dombeck  
Mr. Paul Driscoll  
Ms. Jennifer Duddy  
Mr. Lawrence Dwight  
Ms. Pamela Edgecomb  
Ms. Melissa Emerson  
Mrs. Helen Eugley  
Mr. David Everett  
Mr. and Mrs. David Farnsworth  
Mr. and Mrs. Jerome Feinberg  
Mr. Christopher Ford  
Mr. and Mrs. William Foresman  
Mr. Richard Foss  
Ms. Kelly Foss  
Ms. Faith Fraijo  
Ms. Georgia Francis  
Mr. and Mrs. Michel Francoeur  
Mrs. Theresa Gallupe  
Mr. and Mrs. Charles Garland  
Mr. Kenneth and Ms. Judith  
RatnerGeller  
Mr. William Geoghegan  
Ms. Rose Marie Gobeil  
Mr. Mark Goldstein  
Mr. James Goodman  
Mr. and Mrs. Bruce Goren  
Ms. Susan Grigsby  
Mr. and Mrs. Wayne Hamilton  
Dr. and Mrs. Donald Hankinson  
Ms. Lillian Haversat  
Mr. Kevin Healey  
Ms. Andrea Hein  
Mr. Merton G. Henry  
Mr. and Mrs. Barry Hobbins  
Mr. William Hogan, III  
Mr. Dick Horan  
Dr. Anne Hunter  
Mr. and Mrs. George M. Hutchins  
Ms. Katie Iverson  
Mr. and Mrs. William Johnson  
Ms. Karen Johnson  
Mr. Chet Jordan  
Mr. Laurence Kane  
Ms. Carol Kelley  
Mr. Clarence King  
Ms. Kristen Kliin  
Ms. Joyce Knight  
Mr. and Mrs. Herbert Kodis  
Mr. M. Milton Kodis  
Mr. and Mrs. Dana Lampron  
Mr. and Mrs. Ralph Lancaster  
Ms. Joan Lillie  
Mr. and Mrs. John Lino  
Mr. and Mrs. William Lott  
Mrs. Kelly Martin

Mr. and Mrs. Stewart McAllister  
Ms. Anne McBrady  
Mrs. Mary Michaud  
Mr. John Moehling  
Mr. and Mrs. Dan Moulton  
Mr. and Mrs. Harold Neuberger  
Mrs. Patricia Noonan  
Ms. Renee Norris  
Ms. Jennifer Osgood  
Dr. and Mrs. Harold Osher  
Ms. Kimberly Palano  
Mrs. Susan Parrella  
Mr. Charles Passerman  
Mr. Roger Patrick  
Mr. Leroy Philbrook  
Mr. Roger Poulin  
Mr. and Mrs. Maynard Prock  
Mrs. Linda Ray  
Mr. Christopher Records  
Mrs. Wilma Redman  
Ms. Debra Richard  
Mr. and Mrs. Bruce Roberts  
Ms. Sue Rondeau  
Ms. Susan Rowan  
Mr. Paul Rumery  
Mr. and Mrs. Alden Sawyer  
Dr. and Mrs. Joseph Schenkel  
Mr. and Mrs. Curtis Scribner  
Mrs. Ann Seitz  
Mr. and Mrs. Danny Sharp  
Mr. and Mrs. David Skinner  
Ms. Debra Skolas  
Mr. Ernest Smith  
Mrs. Sandra Stone  
Mr. and Mrs. John Sullivan  
Mr. Michael Suzor  
Mr. and Mrs. Richard Sweetser  
Ms. Ann Taft  
Mr. Evan Tager  
Mr. and Mrs. Charles Thomas  
Ms. Virginia Thurston  
Dr. and Mrs. Leslie Tripp  
Mr. and Mrs. Raymond Veroneau  
Mrs. Margaret Wasserstrom  
Mrs. Lesa Watson  
Ms. Lynne Whalen  
Ms. Mildred Whitmore  
Ms. Brenda Whitney  
Jeff Young, M.D.  
Alisson's Restaurant  
Bay Square  
Beach Landing Condo Association  
Boralex Stratton Energy LP  
Brooks, Inc  
Cape Elizabeth Police Benevolent  
Cry of the Loon  
DeLorme  
Falmouth Country Club  
Fraternal Order of Eagles #565  
Auxiliary  
Hancock Lumber Company  
Heritage Co. Coppersmiths

House of Lights  
Kelly Services, Inc.  
Local Union 567 IBEW  
Maine Aviation Corp.  
Maine Medical Association  
Medical Mutual Insurance  
Company  
MSAD # 71  
Nappi Distributors  
Nortrax  
Portland Pilots, Inc.  
Relay Fine Consulting  
Safeguard Security Systems  
Schneider Electric  
SMRT Inc.  
South Portland Food Cupboard  
South Portland Housing Authority  
St. John's Parish  
The Foss Company  
Unionville Golf League  
UNUM  
Women's Fitness Studio  
Woodfords Handbell Ringers  
York County Federal Credit Union  
York High School Activity Fund

**Friends of MCF ~ to \$99**

Ms. Laretta Abbott  
Ms. Mary Adams  
Mr. and Mrs. Alvin Ahlers  
Mr. and Mrs. Frank Aiken  
Mr. and Mrs. Pat Albert  
Mr. and Mrs. Richard Albert  
Mr. and Mrs. Laurence Allen  
Mr. and Mrs. Robert Allen  
Mr. and Mrs. Michael Ambrosini  
Ms. Yole Ames  
Mr. and Mrs. Kenneth Ammon  
Dr. and Mrs. Edward Andrews  
Mr. and Mrs. Harry Angelides  
Ms. Paula Armstrong  
Mr. and Mrs. Frank Atherton  
Mr. Kenneth W. Atherton  
Ms. Frances Bachman  
Mr. Gerald Banner  
Ms. Eleanor Bartus  
Ms. Janie Basley  
Mr. and Mrs. Edward Batchelder  
Ms. Janice S. Bayley  
Ms. Martha Beals  
Ms. Jeanette Beaudoin  
Christine Bennett, M.D.  
Mr. and Mrs. Richard Beote  
Ms. Valerie Berg  
Ms. Lurana Bergson  
Ms. Diane Berra  
Mr. Edward Bilsky  
Ms. Katherine Bjorndal  
Ms. Cynthia Black  
Ms. Hanna Blaise  
Mr. and Mrs. Richard A. Blake  
Mr. and Mrs. James Blanchard

Ms. Kim Block  
Mr. and Mrs. Ken Bloom  
Mr. David Bloom  
Mr. and Mrs. Jim Boone  
Mr. and Mrs. Dell Borden  
Mr. and Mrs. Robert Boston  
Mr. and Mrs. Jerry Boudreau  
Mr. and Mrs. Raymond Boudreau  
Ms. E.P. Boudreau  
Mr. and Mrs. James Bougie  
Mr. Gregory Boulos  
Ms. Jo-Anne Bourque  
Ms. Ida Boutet  
Ms. Linda Brackley  
Ms. Shirley Bradbury  
Mr. and Mrs. George Brawn, Jr.  
Ms. Ruth Brennan  
Mrs. L.C. Britton  
Ms. Anna Broome  
Mr. and Mrs. Richard Brown  
Mr. and Mrs. Robert Brown  
Ms. Joanne Flaherty Brown  
Mrs. Marianne Buck  
Mr. and Mrs. Craig Burgess  
Ms. Sheryl Burns  
Ms. Wendy Bush  
Ms. Diana Butler  
Mr. and Mrs. Raymond Cady  
Mr. Robert Cain  
Mr. and Mrs. James Callahan  
Mr. and Mrs. Carl Campagna  
Mr. and Mrs. Leonard Cantin  
Mr. and Mrs. Maurice Caron  
Mr. and Mrs. John Carr, Jr.  
Ms. Mary Caruso  
Mr. and Mrs. Frank Catalano  
Ms. Sandra Cayford  
Mr. and Mrs. Robert Chabot  
Mr. and Mrs. Fred Chadwick  
Ms. Jean Childs  
Ms. Susan Ciarfella  
Mr. and Mrs. David Clark  
Mr. and Mrs. Stephen Clark  
Mr. and Mrs. K. Bryce Clayton  
Mr. and Mrs. Lewis Clough  
Ms. Janice Cobb  
Ms. Joyce Cobb  
Ms. Elsie Coffey  
Mr. and Mrs. Harvey Cole  
Ms. Marie Condon  
Mr. Brian Connelly  
Ms. Laura Connolly  
Ms. Darcy Connor  
Ms. Marcia Cook  
Mr. and Mrs. Michael Cookish  
Ms. Pauline Coombs  
Mr. A. Nicholas Coppola  
Ms. Anna Coppola  
Ms. Marilyn Cormier  
Mr. and Mrs. Martin Costello  
Mr. and Mrs. Philip Cowan  
Ms. Joyce Cowing

Mrs. Brenda Crane  
Mr. and Mrs. William Crangle  
Ms. Maybelle Crasnick  
Ms. Joanne Creapeau  
Ms. Jessie Creighton  
Mr. Jeffery Crocker  
Ms. Janice Crockett  
Mr. and Mrs. Christopher Crowl  
Ms. Kathleen Currier  
Mr. Michael Cutting  
Mr. and Mrs. Norman Cyr  
Mike and Linda Daley  
Mrs. Cheryl Dalton  
Ms. Peggy Daniels  
Mr. Mark D'Anzi  
Ms. Laura Davis  
Ms. Thelma Day  
Ms. Mary Dayton-Follo  
Mr. and Mrs. Ralph DeAngelis  
Ms. Debra Decato  
Ms. Audrey DeCosta  
Mr. and Mrs. Thomas Delahanty  
Mr. and Mrs. Thomas Delahanty, II  
Ms. Janet Delile  
Mr. Michael DeLuca  
Ms. Jeanie Demaree  
Mrs. Linda Demers  
Mr. Michael Demicco  
Ms. Ellen Demmons  
Mr. and Mrs. David Denbow, Sr.  
Ms. Margaret DeSarno  
Ms. Mary Ellen Deschenes  
Mr. Ernest Desmarais  
Ms. Sarah Desmarais  
Dr. and Mrs. Richard Dillihunt  
Ms. Jean Dodge  
Mr. and Mrs. Gilbert Domingue  
Ms. Beatrice M. Dorbacker  
Ms. Kirsten Dorsey  
Ms. Jean Dostie  
Ms. Mary Douglas  
Mr. and Mrs. Wesson Douglas, Jr.  
Mr. and Mrs. Allan Dow  
Mr. and Mrs. Neal Dow  
Mr. and Mrs. Lloyd Drew  
Mr. Michael Drinan  
Mr. and Mrs. Wendell Drown  
Mr. and Mrs. Arthur Duffy  
Ms. Maureen Duggan  
Ms. Carol Durkee  
Mr. Robert M. Dyer  
Ms. Dorothy Eagan  
Ms. Constance Eck  
Ms. Margaret Edwards  
Mr. and Mrs. Francis Egan  
Mr. Rick Elias  
Ms. Lori Ellen  
Mr. and Mrs. George Ellis  
Ms. Judith Ellis  
Lawrence and Molly Emery  
Mr. Joseph Esposito  
Mr. and Mrs. James Everhart

Ms. Frances Fallon  
Ms. Mandy Farrar  
Mr. and Mrs. Robert Fazio  
Mr. Phil Fearon  
Mr. and Mrs. Joseph Feeney  
Mr. and Mrs. Rudolph Ferrante  
Mr. and Mrs. Francis Ferrara  
Mr. Robert Ferraro, Sr.  
Ms. Audrey A. Findlen  
Ms. Mary E. Finnegan  
Mr. and Mrs. John Fisher  
Ms. Elaine Flaherty  
Ms. Margo Flanagan  
Mr. and Mrs. Mike Floridino  
Ms. Caryn Fogg  
Mrs. Gertrude Foley  
Ms. Kathleen Ford  
Ms. Enid Foshay  
Ms. Patricia Foster  
Mr. Roland Fournier  
Ms. Judith Fraser  
Ms. Kristina Gagne  
Mr. and Mrs. C. Edwin Gallant  
Mr. and Mrs. Norman Gallant  
Mrs. Mary Gallant  
Mr. and Mrs. Douglas Gauvreau  
Mr. and Mrs. Real Gendreau  
Ms. Helen Gerry  
Mr. and Mrs. Carl Geyer  
Dr. and Mrs. George Geyerhahn  
Ms. Clarice Giusani  
Ms. Leona Glidden  
Ms. Nancy Goddard  
Ms. Alice Going  
Ms. Lois Gooch  
Mr. and Mrs. Norman Goodwin  
Mr. and Mrs. Edward Googins  
Ms. Vivian Gosselin  
Mr. and Mrs. Joseph Gottheim  
Mrs. Ruth Grafton  
Mr. and Mrs. Richard Graves  
Mr. Robert Graves  
Mr. Douglas Green  
Ms. Joyce Grieco  
Mr. and Mrs. Raymond Gross  
Ms. Roberta Gruver  
Mr. and Mrs. Ken Guiseley  
Mr. and Mrs. Walter Gurschick  
Mr. and Mrs. James Hachey  
Mr. Nathan Hagelin  
Mr. and Mrs. Hyman Hait  
Ms. Anita Hamblett  
Mr. and Mrs. Kenneth Hanson  
Ms. Mariann Hanson  
Ms. Barbara Haraden  
Mrs. Sheila Hardy  
Mr. and Mrs. William Harris  
Mr. and Mrs. Charles Hartman  
Mr. Robert Hasson, Sr.  
Mr. and Mrs. Arthur Hatt  
Mrs. Kelley Haubois  
Mr. and Mrs. Joel Hawkes

Ms. Kathie Hawkes  
Mrs. Bridget Healy  
Mr. and Mrs. Brian Heffron  
Ms. Barbara Heider  
Ms. Jane Herd  
Mrs. Harriette Hibbard  
Mr. and Mrs. Frank Higgins  
Mr. and Mrs. Alvin Hilton  
Mrs. Judi Hilton  
Mrs. Phyllis Hilton  
Ms. Della Hitchcox  
Mr. and Mrs. Sterling Hoak  
Mr. Clayton Hoak  
Mr. and Mrs. Charles Hobart  
Ms. Edwina Hobbs  
Ms. Wendy Hodgdon  
Ms. Marilyn Hodgman  
Mr. Richard Holt  
Mr. and Mrs. Richard A. Homan  
Mr. Richard Howell  
Ms. Mildred Howell  
Mr. and Mrs. John Hughes  
Mr. Matthew Hunter  
Mr. and Mrs. Elmer Inman  
Ms. Cheryl Jacobs  
Mr. and Mrs. Alexander Jacovino  
Mr. and Mrs. Herman Jalbert  
Mr. and Mrs. Colin Jandreau  
Mrs. Arthur M. Johnson  
Mrs. Arthur W. Johnson  
Ms. Elaine Johnson  
Ms. Kathryn Johnson  
Ms. Lorraine Johnson  
Mr. and Mrs. Wilton Jones  
Mr. and Mrs. Arthur Jordan  
Mr. and Mrs. Perley Jordan  
Ms. Joanne Jordan  
Ms. Pat Jordan  
Mrs. Judith Joyce  
Mrs. Simone Joyce  
Mr. and Mrs. August Kalmus  
Mr. and Mrs. Bill Kany, Jr.  
Ms. Dianne Keenan  
Mr. James Kelly  
Ms. Nancy Kelson  
Mr. and Mrs. John H. Kennedy  
Ms. Mary Kenney  
Mr. John Kheil  
Mr. and Mrs. Robert Kierstead  
Mr. Donald C. Kilgour  
Ms. Carol Kindlimann  
Mr. William King  
Ms. Ernestine King  
Ms. Kristen King  
Mr. and Mrs. George Knight  
Mr. Frank Knight  
Ms. Lillian Koocher  
Mr. and Mrs. Gerald Korn  
Mr. and Mrs. John Koulovatos  
Ms. Margaret Kremontz  
Ms. Simeon Kriesberg  
Ms. Gloria Kuhl

Ms. Donna Kurtz  
Mr. and Mrs. Daren Labbe  
Mr. Patrick Labbe  
Ms. Robin LaBonte  
Mr. J. Emmons Lancaster  
Ms. Jane Lancaster  
Ms. Virginia Langelier  
Ms. Deborah Langley  
Ms. Connie Larochele  
Ms. Laura Larrabee  
Mr. Don Larson  
Mr. and Mrs. Robert A. Laskoff  
Mr. Roger Lawrence  
Ms. Beth Lawrence  
Ms. Phyllis M. Leary  
Mr. and Mrs. Ronald LeBlanc  
Mr. Robert Lee  
Ms. Mary Lefebvre  
Dr. and Mrs. Laban Leiter  
Ms. Linda LeLansky  
Ms. Catherine Lemieux  
Ms. Betty Levasseur  
Ms. Dorothy Lewis  
Ms. Marion Libby  
Ms. Mary Libby  
Ms. Hazel Liberatore  
Ms. Linda Linnell  
Mr. and Mrs. Sidney Linscott  
Ms. Phyllis Little  
Mr. and Mrs. Willis Locke  
Mr. Linwood Lord  
Ms. Hazel Lord  
Ms. Nancy Lowell  
Ms. Mary Lunney  
Mr. and Mrs. Mike MacDonald  
Ms. Candis MacDuffie  
Ms. Anne Madore  
Ms. Thelma Maling  
Ms. Sally Maller  
Mr. and Mrs. Bob Mann  
Ms. Carolyn Mardosa  
Mr. and Mrs. Robert Marquis  
Mr. and Mrs. Lyle Marshall  
Ms. Dorothy Martell  
Mr. and Mrs. James Martin  
Mr. James Martin  
Mr. Norman Mason  
Ms. Alice Mason  
Mrs. Leslie Mathis  
Mr. Louis Mattuchio, Jr.  
Mrs. Mary Maxwell  
Ms. Marjorie McAllister  
Mrs. Catherine McCabe  
Mr. Harry McCall  
Mrs. Anna Marie McCormick  
Mr. and Mrs. W. C. McGarvey  
Mr. and Mrs. Walter McKenney  
Mr. Malcolm McLeod  
Ms. Jean McMahan  
Ms. Marge McMillin  
Ms. Sarah McNamara  
Ms. Mary Mead

Mr. and Mrs. Edward Meehan  
Mr. and Mrs. John Melquist  
Mr. and Mrs. Willis Merrill  
Ms. Peggy Merrill  
Mr. and Mrs. John Messer  
Ms. Mary Messer  
Ms. Maggie Meyer  
Mr. Merle Michaud  
Ms. Shelly Michaud  
Mr. and Mrs. Allen Miller  
Mr. and Mrs. Donald Miller  
Mr. Mark Miller  
Mrs. Grace Miller  
Ms. Nancy Miller  
Ms. Mary Millett  
Mr. and Mrs. Joseph Minervino  
Ms. Lori Mininni  
Mr. and Mrs. Stephen Mitchell  
Mr. and Mrs. William Moody  
Mr. and Mrs. Frank Morgan  
Mr. and Mrs. Stephen Morgan  
Ms. Dianne Morin  
Mr. Joshua Morrell  
Mr. and Mrs. James Moulton  
Mr. and Mrs. Peter Murray  
Ms. Judie Musetti-Joslin  
Mrs. Carole Nadeau  
Ms. Gloria Nadeau  
Mr. and Mrs. Richard Nansel  
Ms. Theresa Nappi  
Mr. John Naulteus  
Ms. Effie Naum  
Ms. Julia Naum  
Ms. Mary Negro  
Mr. and Mrs. Donald Neuts  
Mr. James T. Nicholas  
Ms. Lucinda Nugent  
Mr. and Mrs. Dale Nunan  
Mr. Mark O'Brien  
Ms. Patti Oliviera  
Mr. Frederick Olson  
Mr. James Otis  
Mr. and Mrs. Norman Ouellette  
Mr. and Mrs. Paul Ouellette  
Mr. and Mrs. Carl Packer  
Ms. Pamela Padget  
Mr. and Mrs. Roger Pageau  
Mr. and Mrs. Jeffrey Paine  
Ms. Rose Palano  
Ms. Anne Palmer  
Mr. and Mrs. Fred Papandrea  
Mr. and Mrs. Mark Paradis  
Ms. Cathlene Parkhurst  
Ms. Nancy Parmenter  
Mr. and Mrs. Carl Pascarella  
Mr. and Mrs. Robert Payne  
Mr. and Mrs. Burton Payson  
Mr. Lowell Pease  
Mr. and Mrs. George Peckham  
Ms. Kay Pellechia  
Mr. and Mrs. Gary Pelletier  
Drs. Douglass and Doris Pennoyer

Mr. and Mrs. Domenic Pensavalli  
Mr. Stuart Pergament  
Ms. Dorothy Perham-Whittier  
Mr. and Mrs. Thomas Perron  
Ms. Karen Perrone  
Mr. and Mrs. Robert Perry  
Mr. and Mrs. Rodney Pierce  
Ms. Alice Mary Pierce  
Ms. Viola St. Pierre  
Ms. Mary Pietroski  
Ms. Emilienne Pinette  
Mr. and Mrs. James Pizzo  
Ms. Cheryl Plourde  
Mr. and Mrs. Peter M. Plowman  
Mr. and Mrs. Gilbert Post  
Ms. Gail Preble  
Mr. and Mrs. John Price  
Mrs. Shirley Prior  
Mr. and Mrs. Americo Pulzetti  
Ms. Laurie Pyszkowski  
Mr. and Mrs. Greg Radziszewski  
Mr. and Mrs. Jacques Rancourt  
Mr. and Mrs. Kenneth Rauschke  
Mr. and Mrs. Neil Raymond  
Mr. and Mrs. Horace Record  
Mr. and Mrs. Del Reed  
Mr. and Mrs. Pet Reming  
Ms. Dianne Reynolds  
Mr. and Mrs. Read Rich  
Mrs. Sarah Richard  
Mr. John Richardson  
Mr. and Mrs. Bernard Ricker  
Mrs. Miriam Riefe  
Ms. Darlene Riel  
Mr. and Mrs. Stephen Rivernider  
Ms. Leanne Robertson  
Mr. and Mrs. Jerry Robinov  
Mr. and Mrs. Ronald Rochefort  
Ms. Anne Rodier  
Ms. Kim Rogalin  
Mr. and Mrs. Keith Rogers  
Mr. and Mrs. Raymond Rogers  
Mr. and Mrs. Richard Rossignol  
Mr. and Mrs. Jake Roush  
Mr. Francis Roy  
Ms. Donna Rumery  
Ms. Evelyn Russell  
Mr. and Mrs. Greg Salow  
Ms. Janice Sanborn  
Mr. Jim Sandler  
Ms. Alfreda Savoy  
Mr. Donald Sawyer  
Ms. Christine Scott  
Mr. and Mrs. Daniel Seifert  
Mr. and Mrs. Dick Sennett  
Mr. and Mrs. Joe Sershen  
Mr. and Mrs. John Sevigny  
Ms. Barbara Shannon  
Ms. Kathleen Shea  
Mr. and Mrs. Michael Sheehan  
Ms. Ellen Banks Shibles  
Ms. Eileen Shutts

Mr. and Mrs. Richard Skinner  
Ms. Jean Skinner  
Mr. and Mrs. Peter Smallidge  
Mr. and Mrs. Myron Smith  
Mr. Gray Smith  
Ms. Gaila Smith  
Ms. Jean Smith  
Mr. and Mrs. Donald Snow  
Mr. and Mrs. Ralph Snow  
Mrs. Jayne Soles  
Ms. Margaret Soule  
Ms. Caroline M. Southall  
Ms. Sue Speers  
Ms. Lillian Spiller  
Mr. Charles Stacy  
Ms. Suzanne Stacy  
Mr. and Mrs. Alfred Stanley  
Ms. Gail Staples  
Mr. and Mrs. Harry Starbird, Jr.  
Mr. and Mrs. Carl Stasio  
Ms. Nancy Steffe  
Ms. Shirley Steffe  
Mr. and Mrs. Charles Stevens  
Mr. and Mrs. Richard Stevens  
Mr. and Mrs. Roy Stevens  
Mr. Ansel Stevens  
Mr. Richard Stevens  
Ms. Deborah Stone  
Mr. H. Spencer Stuart  
Mr. Ronald Stuart  
Ms. Nancy Sullivan  
Mr. and Mrs. Jack Sutton  
Ms. Catherine Sutton  
Mr. and Mrs. Galen Swan, Jr.  
Mr. and Mrs. Galen Swan, Sr.  
Mr. and Mrs. Arthur Sweeney  
Mrs. Mary Sweet  
Mr. and Mrs. Bruce Swerling  
Mr. Joseph Sylvester  
Mr. and Mrs. Richard Symonds  
Ms. Barbara Tennent  
Mr. and Mrs. Herbert Tenney  
Ms. Holly Thebarg  
Mr. and Mrs. Bertrand Theroux  
Mr. and Mrs. Henry Thomas  
Ms. Deborah Thompson  
Ms. Donna Thompson  
Ms. Marilyn Thompson  
Mr. and Mrs. Norman Thomson  
Mr. G. Virgil Tilton  
Ms. Prudence Todd  
Ms. Sarah Toothaker  
Ms. Mary Torrisi  
Mr. John Townsend  
Dr. and Mrs. Leslie Tripp  
Mr. and Mrs. Richard Tripp  
Ms. Kathy Twitchell  
Ms. Judith Twombly  
Ms. Joan Twomey  
Ms. Patricia Tynan  
Mr. Kenneth Utz  
Ms. Mallory Vaccaro

Miss Sylvia K. Vincent  
Mr. and Mrs. Ben Viola  
Ms. Caroline Vozella  
Ms. Ella Walker  
Mr. and Mrs. Frank Wallington  
Ms. Karen Ward  
Ms. Virginia Warren  
Ms. Margaret Watts  
Ms. Margaret Way  
Mr. and Mrs. Raymond Webb  
Mr. and Mrs. William Welch  
Mr. Clifford Welch  
Ms. Helen Welch  
Mr. and Mrs. Charles Wellman  
Mr. and Mrs. Franklin Whitney  
Mr. and Mrs. Wayne Whitney  
Ms. Susan Whitney  
Ms. G. Helene Whitty  
Ms. Wendy Wilder  
Mr. and Mrs. Jerry Williams  
Ms. Harriet Williams  
Ms. Donna Williamson  
Ms. Judy Willis  
Mr. and Mrs. Keith Willner  
Ms. Eleanor Wilson  
Ms. Mary Wilson  
Ms. Tamantha Wilson  
Ms. P. Jaye Winchester  
Ms. P. Jaye Winchester  
Mr. and Mrs. Daniel Winschel  
Mr. and Mrs. William Wise  
Ms. Mary Anne Wood  
Ms. Audrey Woodbrey  
Mr. and Mrs. Chet Woods  
Mr. and Mrs. Russell Wright  
Mr. and Mrs. Robert Young  
Ms. Sylvia Young  
Mr. and Mrs. John Zinck  
Mrs. Georgette Zuniga  
AARP Maine  
ADS Financial Services Solution  
American Legion Auxiliary Unit  
No. 86  
Aroostook Retired Educators  
Association  
Bath Iron Works  
BFC Marine  
Biddeford Resource Center  
Bopp Family Charitable Trust  
Chalmers Realty  
Class of 1948  
CSC Employee Campaign  
Custom Disability Solutions  
Employees  
DFAS Limestone Booster Club  
Dr. and Mrs. Thomas Lever  
Easy Does It, Inc.  
Elder Planning Advisors of Maine  
Friendly Village of Gorham  
H.H. Sawyer Realty Company  
Hansen's Well Drilling, Inc.  
Hurley Travel Experts  
Justices of the Maine Superior

Krainin Real Estate  
L. O' Connor, Inc.  
Leif J. Osterberg, Inc.  
Local Union No. 223 I.B.E.W.  
M.S.A.D. No. 24/ Van Buren  
Maine Air National Guard  
Maine Molecular Imaging  
Maine School Union No. 104  
Mountain View Youth Development  
Mr. and Mrs. Todd Boos  
Ms. Angela Smith  
Ms. Arlene Butts  
Ms. Carolyn McIntire  
Ms. Donna Hilton  
Ms. Judy Collier  
Ms. Lancee Smith  
Ms. Rita Willis  
Ms. Sylvia Carr  
National Semiconductor  
Norway Savings Bank  
Old Ferry Road Development Corp.  
Pine Tree Estates  
Pinetree Branch 156 Fleet Reserve  
Progressive Insurance  
Robert Wood Johnson University  
Scarborough Family Chiropractic  
Sea Road School  
Service Employee International  
Skillin's Greenhouses  
Spruce Head Community Church  
St. George Lodge 132 IOOF  
The Lang Family  
Tourist Railway Association  
United Baptist Church  
United Food and Commercial  
Vacationland Bowling Center  
Woodfords Woman's Club  
Youngblood Co. Inc.

#### SPECIAL EVENTS

*Note: Special Event totals are net (after expenses). We are grateful for each special event gift received. With growth in events, (individual donations now number in the thousands), we are limiting the listing to sponsor information and highlights. Thank you for understanding.*

#### 18th Annual BETTY BLAKEMAN MEMORIAL TENNIS TOURNAMENT July 2007 ~ raised \$12,149

**Advantage Sponsors ~ \$2,000**  
BBMTT  
TD Banknorth

**Major Sponsors ~ \$1,200**  
Northern Data Systems

**Signature Sponsors ~ \$600**  
Blakeman/Mavor Group of Smith  
Barney

C. W. Zumbiel  
C. Baker & Associates  
Clark Associates Insurance  
Dock Square Clothiers Inc.  
H.M. Payson & Co.  
Le Passe-Temps Inc.  
Maine Center for Cancer Medicine  
& Blood Disorders  
Mutual Service Corp.

**Hospitality Sponsors ~ \$300**  
Citigroup Foundation  
Brian Noyes  
Smith Barney

**Friends of BBMTT ~ \$150**  
Jotul North America  
Racket and Fitness Center

#### 1st ROTARY CAR CRUISE FOR CANCER September 2007 ~ raised \$5,800

#### Sponsors and Participants

Amy Alward Agency  
Annie Wells and friends  
Bruce Jones  
C.M. Bowker Co.  
Creative Office Pavilion  
Dick Hall and friends  
Dirk Thomas Real Estate  
Earle Noyes & Sons, Peter Noyes  
Gus Karlsen and friends  
Jonathan Aube and friends  
Lowry and Associates  
North Deering Dental Associates  
Northeast Delta Dental  
Noyes, Hall & Allen Insurance  
Pape Chevrolet  
Paul Tully and friends  
Port City Graphics  
Ranello & Ranello, Inc.  
Re/Max by the Bay  
Richard Giles  
Saco & Biddeford Savings  
Institution  
Sally Harris  
South Portland Rec. Dept.  
Sprague Energy Corp.  
Team Ranellohttp://www.wbt.com/

#### 10th ANNUAL GOLF CLASSIC August 2007 ~ raised \$17,400

**Signature Foursomes ~ \$1,000**  
Abraxis BioScience  
AstraZeneca  
Fraternal Order of Eagles Portland  
Dan Hayes, M.D.  
Ann Hunter, M.D. and friends  
IDEC Pharmaceutical  
Malone Commercial Brokers  
Millennium Pharmaceuticals, Inc.

Offitech New England  
Orthopaedic Associates of Portland  
Perkins Thompson  
Plastic Surgery Center of Maine  
Portland Sea Dogs  
Daniel Redmond/ R. M. Davis

#### Other

Bennett Electric  
Fairfield-Kilgore Agency, LLC  
Genentech  
GHS Data Management  
Pharmacy Group of New England,  
Inc.  
Roche

#### MARY'S WALK AND KERRYMAN PUB 5K

March 2008 ~ raised \$192,000

#### Major Sponsors ~ \$2,500 and more

Bangor Savings Bank  
CRI-SIL  
Dead River Company  
George's Sandwich Shop  
Hannaford Bros. Co.  
Libby O'Brien Kingsley  
Maine Center for Cancer Medicine  
and Blood Disorders  
New Hampshire International  
Speedway  
Saco Biddeford Savings Institution  
Sam L. Cohen Foundation  
Stafford Advisory Group  
UNUM

#### Registration Sponsors ~ \$1,000 - \$2,499

Abbott Labs  
Concordia Partners  
Genentech  
Kennebunk Savings Bank  
MERC  
Northern Data Systems  
Saco Valley Shopping Center  
Simply You  
Spectrum Medical Group  
Starbucks Coffee Company  
TD Banknorth  
Wing-Benjamin Trust

#### Route Sponsors ~ \$500 - \$999

The Baker Co.  
Barton & Gingold  
Bergin Parkinson  
Biddeford Saco Rotary  
Biddeford Savings Bank  
Bonanza  
Champagne's Energy  
Correct Building Products  
Dawson Smith Purvis & Bassett,  
P.A.

First Financial  
General Dynamics  
Carl Goodwin Inc.  
Haley's Metal  
Lee Auto  
MMCRI  
Nimlok Maine  
PM Construction  
Paquin and Carroll Insurance  
Petrucci Martin and Haddow  
Saco Bay Rotary  
Saco Valley Credit Union  
Sanford Institution for Savings  
Smith Elliott Smith & Garney, PA  
Southern Maine Medical Center  
Woodman, Edwards, Danylik, &  
Austin, PA  
Worthing & Going

#### Friends ~ \$100 - \$599

Atlantic Comfort Systems  
All Day Breakfast  
Bayley's Camping Resort  
Begin and Associates, PA  
Biddeford Saco Country Club  
Bob & Mike's Mini-Mart  
Carpet Town  
Coldwell Banker  
Community Pharmacy of Saco  
Deep Brook Golf  
Deering Lumber  
Dennett Craig & Pate  
Don's Sheet Metal  
Doyle Enterprises  
Eastland Construction &  
Management, Inc  
Expanded Rubber Products  
Family Eye Care  
Friendship Motor Inn  
Goodall Hospital  
Grand Hotel  
Group One Realty  
Holiday Inn Express  
Hussey Seating  
Joseph's by the Sea  
Kennebunk Rotary Club  
Landmark Restaurant  
Mike Eon Associates  
Mohlin & Company  
Monaghan Leahy  
Moody's Collision Centers  
NR Brothers  
New Morning Natural Foods  
Odorite  
Orthopedic Surgery Assoc.  
Patco Construction  
Peoples Choice Credit Union  
Poirier Electric  
Precision Screw  
Prescott Metal  
Residential Mortgages  
Roux's Kitchen & Bath

Rubb Building Systems  
Saco Sports and Fitness  
Silver Springs/Ingraham Trust  
Trades Center Inc  
Tide Runner  
Dean Tourigny, DDS  
Trades Center Inc  
Williams Foundations  
Wood Structures, Inc.

#### Promotion and Publicity In-Kind

Big Hits Y100.1  
Helpful Website  
Nimlok Maine  
Olympia Sports  
Time Warner  
WGME 13

#### In-Kind

BBI Waste  
Biddeford Dairy Queen  
Blow Brothers  
Carrabasset Water  
China House  
Dunkin Donuts  
George's Italians  
Good's Potato Chips  
Carl and Betty Goodwin  
Hannaford  
Kerryman Pub  
Mike's Fancy Cakes  
Mr. Bagel  
Pepsi  
Sandler Brothers  
Starbucks  
TJ's Pizza  
Tony's Donuts  
Traditions Restaurant  
US Foods

#### Top Individual Fundraisers

1. Alisa Kelley \$3,210.00
2. Callie Black \$2,355.00
3. Margie Forrester \$2,275.00
4. Elaine Marino \$1,986.22
5. Debbie Grove \$1,650.00
6. Matt Libby \$1,620.00
7. Kelly Saint Marie \$1,120.00
8. Robin Huguenin \$1,032.00
9. Louis Frumer \$1,115.00
10. Allison Desjardins \$985.00
11. Jerry Angier \$895.00

#### Top Fundraising Teams

Friends and Family  
Eileen's Queens \$8,105

#### School and Community Group

Sea Road School, Kennebunk  
\$3,885

#### Business Group

Libby O'Brien Kingsley \$3,255

#### Kerryman Pub Road Race Results

1st Place Men: Casey Carroll 15:49  
1st Place Women: Jenna Desrochers  
19:22  
2nd Place Men: Chris Harmon 15:54  
2nd Place Women: Emily Durgin  
19:35  
3rd Place Men: Jeff Sprague 15:55  
3rd place Women: Suzanne Hussey-  
Ray 19:47

#### REMEMBERING TOM ROWE CONCERT

May 2008 ~ raised \$7,182

#### Sponsors

Austin Associates  
Criterium-Mooney Engineering  
Linnell, Choate & Webber  
Maine Center for Cancer Medicine  
and Blood Disorders  
Mechanics Savings Bank

#### In-Kind Sponsors

Curry Printing  
J. S. McCarthy  
Rinck Advertising  
Sun Journal

#### With Thanks to the Musicians

Denny Breau  
Phil House  
Dave Rowe Trio  
Schooner Fare

#### and

Franco American Heritage Center  
L/A Arts  
Tim Sample  
Robert Skoglund

#### TRI FOR A CURE

August 2008 ~ raised \$245,000

#### TRI Sponsors

Endurance ~ \$5,000 and up  
Peak Performance  
Seabags  
Southern Maine Community  
College\*  
Whole Foods Market\*  
WMTW Channel 8\*  
Wright Express

#### Determination ~ \$3,000

Burgess Advertising\*  
Offtech NE  
OKIDATA  
Sugarloaf  
Summit Springs Water\*

(\*) signifies an in-kind gift

**Strength ~ \$1,500**

Bank of America  
 Diversified Communications  
 Key Bank  
 Maine Center for Cancer Medicine  
 Maine Sports Massage Team\*  
 Mercy Hospital  
 Port City Life Magazine\*  
 Rosemont Floral\*  
 Scarborough Family Chiropractic\*  
 Sun Journal / Forecaster\*  
 Voyagers Jewelry Design\*

**Speed ~ \$750**

Acalog\*  
 Allagash Brewing  
 Anthem Blue Cross Blue Shield  
 Baker Newman and Noyes  
 CIEE  
 Coast 93.1\*  
 Digital Architecture  
 Extreme Home Garage  
 Giroux Oil  
 Holden Insurance Company  
 House of Lights  
 LUNA Bar  
 Marchese & Associates  
 NORDX  
 Orthopaedic Associates  
 Perkins Thompson\*  
 Procter & Gamble  
 Q97.9\*  
 Seagrass Bistro  
 The Cianchette Group\*  
 Vermont Bike Company

**Run with Joanie Sponsor**

Maine Running Company

**Pre Race Dinner Sponsor**

Spectrum Medical Group

**Display Partner**

Bei Capelli Salon  
 Bondi-Bands  
 Function Drinks\*  
 J. Kelley Salon  
 Liz Lesser Designs  
 Mary Kay  
 Medical Summary.com  
 Melaleuca Co.  
 Pure Madness\*

**Mile Marker**

Berry, Dunn, McNeil  
 Calm Waters Salon & Spa  
 Cuddledown  
 Extreme Home Garage  
 Foreside Tavern  
 Marchese & Associates  
 Nobel Biocare  
 Nomads

Nonantum  
 North Deering Dental  
 Seabags  
 Shipyard Brewing Company  
 Smart Landscaping  
 Trip Quijment  
 Whole Foods Market  
 Workout Fitness Store  
 Yarmouth Chiropractic

**Training Partners**

1st Tri  
 Body of Work  
 Natural Fitness  
 Tri Chix

**TRI Fundraisers****Participants who raised \$1,200 or more**

Rebecca Aceto  
 Ann Babbitt  
 Bethany Beausang  
 Holly Benoit  
 Lesley Blethen  
 Abby Bliss  
 Phaedra Bond  
 Matti Bradley  
 Carol Cain  
 Sarah Christian  
 Stacy Cimino  
 Julie Ciraldo  
 Susan Clifford  
 Karen Cloutier  
 Rebecca Damon  
 Laura Davis  
 Crystal Davis  
 Sandra Day  
 Susan Downey  
 Marianna Fenton  
 Susan Gallo  
 Betsey Greenstein  
 Maura Halkiotis  
 Talie Harris  
 Jennifer Hill  
 Betsy Hood  
 Connie Lannon  
 Jan Macleod  
 Paula Mahony  
 Jean Ginn Marvin  
 Kathleen Myers  
 Diane Pelletier  
 Susan Phillips  
 Susan Ryberg  
 Carolyn Sanders  
 Melissa Smith  
 Patricia Smith  
 Michele Sofarelli-Crone  
 Meredith Strang Burgess  
 Kyra J Suwak  
 Judith Tammaro  
 Leah Temm  
 peg thompson

Kim Tierney  
 Linda Varrell  
 Wanda Verreault  
 Robin Walker  
 Susan Williams  
 Heather Zachau

**Participants who raised \$600-\$1199**

Betsy Abbott  
 Anne Marie Betters  
 Sheena Bitetti  
 Christina Bournakel  
 Tamara Bowdren  
 Andrea Brown  
 Neallie Budway  
 Liz Caldwell  
 Mariah Cassidy  
 Amy Cembor  
 Virginia Crocker Busque  
 Lori Davis  
 Kim Davis  
 Erika DeGeorge  
 Jennifer Dimond  
 Leslie Durgin  
 Deborah Edwards  
 Karly Eretzian  
 Stephanie Figueroa  
 Emily Foshay  
 Mary Fox  
 Caitlin Fullerton  
 Tashia Geaumont  
 Brenda Gile  
 Michele Girard  
 Rachel Giroux  
 Lisa Hallee  
 Clare Harrington  
 Pauline P Hodge  
 Jessica Ireton-Hewitt  
 Cassie Jones  
 Mackenzi Keliher  
 Amy Latham-Rinck  
 Laura Lavoie  
 Lindsay Lebel  
 Jillian Lengyel  
 Ashlea Loring  
 Amy Maloney  
 Ann Messinger  
 Rolinda Mitchell  
 Mari Miya  
 Lily Montgomery  
 Sarah Mullin-Islam  
 Joan Murray  
 Erica Napuli  
 Deb Nelson  
 Marylou Nesbitt  
 Kayla OMalley  
 Betsy Parker Landmann  
 Susan Parr  
 Samantha Perkins  
 Anne Perley  
 Mary Quinones

Erin Regan  
 Courtney Richambault  
 Janice Rogers  
 Elyzabeth Smith  
 Sarah Spiegel  
 Susan Stinson  
 Kristin Stoutenburg  
 Meredith Tipton  
 Jen Vasconcelos  
 Laura Vecchio  
 Katy Wallace  
 Sharon Ware  
 Andrea Wedge  
 Alisha Williams  
 Karen Wilson  
 Lori Wilson

**Participants who raised \$300-\$599**

Nancy Barry  
 Robin Baukus  
 Renee Bender  
 Sandy Benson  
 Liz Bergst  
 Jennifer Bilodeau  
 Marley Blair  
 Heather Blanchard  
 Jennifer Bowdoin  
 Denise Breer  
 Nicole Brown  
 Kate Brown  
 Jennifer Burnham  
 Toni Burns  
 Andrea Burton  
 Theresa Casavant  
 Penny Chase  
 Suzanne Chase  
 Susan Clark  
 Marsha Cook  
 Rhonda Cook  
 Filiz Demirci  
 Katy Dixon  
 Lynda Dube  
 Cheryl Farrington  
 Wendy Flynn  
 Denise Garside  
 Wendy Graham  
 Jennifer Greenlaw  
 Joanne Guilbault  
 Pamela Hanisko  
 Meg Hausman  
 Lisa Henderson  
 Elizabeth Holmstrom  
 Jennifer Kinsley  
 Linda Knights  
 Katharine Kostin  
 Allison Landes  
 Marty Lawrence  
 Caitlin Lebel  
 Cynthia Matthews  
 Pamela McAvoy  
 Kerry McBride

(\*) signifies an in-kind gift



Karen McKinney  
 Kathleen Meek  
 Lisa Merrill  
 Melissa Michaud  
 Carol Millhouse  
 Perian Moore  
 Gail Neal  
 Robyn Osborn-Freed  
 Katie Ouellette  
 Joyce Parsons  
 Jackie Pearl  
 Michele Praught  
 Marian Rabe  
 Stacey Rogers  
 Tisha Sawyer  
 Melissa Schifano  
 Angela Sclar  
 Catharine Scruggs  
 Sandra Smith  
 Rebecca Stamaris  
 Michelle Vallee  
 Lauren Vashon  
 amanda vigue  
 Elaine Volan  
 Maureen Wedge  
 Angela Weston  
 Deb Young

**Participants** who raised \$100-\$299

Jennifer Baker  
 Margaret Benoit  
 Adriane Berry  
 parkie Boley  
 Carrie Boudreau  
 Pam Brennan  
 Janet Brewer  
 Lisa Brislin  
 Melissa Brown  
 Stephanie Brown  
 Jeanne Bryand  
 Susan Chantigny  
 Lucia Chomeau Hunt  
 Margaret Clews  
 Claire Clonan  
 Bridget Cloutier  
 Melanie Cogan  
 Suzanne Connolly  
 Misty Credicott  
 Marian Dalton  
 Yesim Demirci  
 Nicola Donatelli  
 Lynn Dube  
 Laura Duran  
 Aria Eee  
 Kate Ekedahl  
 Isabelle Farley  
 Judy Farnham  
 Kathy Finnell  
 Christina Fish  
 Cynthia Fisher  
 Donna Flanigan

Katie Foley  
 Ann Foley  
 Rosemary Fowles  
 Jessica Gagne  
 Amy Gravell  
 Joyce Hale  
 Angela Hamel  
 Tracey Hansen  
 Deanna Harnett  
 Kelly Hasslinger  
 Amanda Henson  
 Susan Hight  
 Stella Hills  
 Elizabeth Huebener  
 Sarah Irish  
 Michelle Janosik  
 Heidi Johnston  
 Amanda Jones  
 Chris Keiter  
 Kate Kelly  
 Deanna Kilbreth  
 Carolyn Krahn  
 Anne LaFond  
 Jeanne Lamontagne  
 Sarah Lancaster  
 Marnie LaRose  
 Sharon Leddy - Smart  
 Deborah Lemieux  
 Debra Macdonald  
 Kathleen Marquis  
 Laurie Martin  
 Maria Mazorra  
 Emily McCarthy  
 Debra McGill  
 Jodi McGuire  
 Allison McLaughlin  
 Holly McQuinn  
 Patty Medina  
 Anne Nakamura  
 Sharon O'Neill  
 jennifer paradis  
 Pauline Paradis  
 Suzanne Parent  
 Meredith Pendleton  
 Nicole Perham  
 Deborah Phelan  
 Kristy Pulsifer  
 Lisa Read  
 Jennifer Riggle  
 Nichole Robinson  
 Lynnsey Savage  
 Andrea Sawall  
 Lorelee Schaedel  
 Joy Schindler  
 Hannah Schulz  
 Linda Sheehy  
 Deborah Silberstein  
 Rosemarie Smith  
 Marcia Smith  
 Amy Steenstra  
 Jessica Stevenson  
 Ashley Thayer

Elizabeth Upham  
 Rebekah Veilleux  
 Sheryl Watson  
 Tonya Watson  
 Elizabeth Watson  
 Dawn Whitten  
 Stacey Whitton  
 M.C. Williamson  
 Krystal Wysocki  
 Kerry Zabicki

**SEA DOGS MOTHER'S DAY 5K**  
 presented by **Paradigm**  
 May 2008 ~ raised \$17,500

**SUGARLOAF CHARITY**  
**SUMMIT**  
 January 2008 ~ raised \$91,000

**WOMEN'S CANCER FUND**  
 Gifts in Memory of ~

All Angels  
 Priscille Allen  
 Stephanie Anton  
 Faye Armstrong  
 Floyd Bushey  
 Agnes Clark  
 Jane Cunningham  
 Sue Fondriest  
 Lorraine Dauphin Fulham  
 Eunice Galvin  
 Ellen Gordon  
 Mrs. Jamison  
 Laurel Davis Jeffers  
 Brenda Karp  
 Minnie LeTourneau  
 James E. Murray, Jr.  
 Louis Parent  
 Annie Santerre  
 Francie Stone  
 Lynn Sylvester  
 Margaret Tardif  
 Cathy Whalen  
 Laurie White  
 Evelyn Wing

**Gifts made in honor of ~**

Barb & Doris  
 Jean Casey  
 Catherine Cofran  
 Ellen Gordon  
 Diane Pearson  
 Doris Sproul Dietz  
 Cindy Steinort  
 Robin Whitten

**1976 Club** ~ \$5000 and up  
 McDonald's Restaurants of Maine

**Society of Hope** ~ \$2500 to \$4999  
 Barbara and Jennifer Nelson

Marathon  
 Pine Tree Quilters Guild, Inc.  
 York Hospital Breast Cancer Walk  
**2nd Century Club** ~ \$1000 to \$2499  
 Mrs. Diane Ontkush in memory of Laurel Jeffers  
 Toast off the Coast/Medical Case Management

**Carroll Society** ~ \$500 to \$999  
 Expose Design, LLC  
 Ms. Jennifer Fisher  
 Island Operation LLC  
 Portland Ballet

**Promise Club** ~ \$250 to \$499  
 Mr. James Fox  
 Ms. Cheryl Jensen  
 Longfellow School  
 Rainbow Federal Credit Union  
 Stonewall Kitchen  
 Styxx Video Club

**Courage Circle** ~ \$100 to \$249  
 Mr. Donald Bushey  
 Barba + Wheelock  
 Ms. Wendy Dorr  
 Ms. Edwidge Fossett  
 Ms. Joan Hunnewell  
 Northeast Financial  
 Ms. Amanda LaPorte  
 Logan Leavitt: Cancer is a Reality  
 Mr. Philip Townsend  
 Ms. Elaine Van Blerkom  
 Portland Athletic Club Fundraiser

**Friends Club** ~ to \$99  
 Ms. Lynn Abood-Pelletier  
 Ms. Lisa Bellefleur  
 Ms. Patricia Burrows  
 Ms. Christina Bouchard  
 Mr. Ryan Bourque  
 Ms. Susan Brennan  
 Ms. Charlotte Caron  
 Mr. Paul Cormier  
 Ms. Narissa Cunningham  
 Ms. Beverly Dahms  
 Ms. Jennifer David  
 Mr. and Mrs. Ed Doughty  
 Mr. Peter Dwares  
 Mr. and Mrs. John Emerson  
 Ms. Mary Elizabeth Foley  
 Mr. John Fogg  
 Ms. Paulette French  
 Hansen's Well Drilling, Inc  
 Ms. Dorothy Hayward  
 Mr. William Hayward  
 Mr. and Mrs. Richard Hebert  
 Home Instead Senior Care  
 Mr. and Mrs. Robert Jewett  
 Ms. Frances Landolina

Ms. Dianne Law  
 Mr. Vincent Licata  
 Ms. Ellen C. Mahoney  
 Mr. and Mrs. James Nugent  
 Ms. Frances O'Neill  
 Mr. and Mrs. Lewis Perry  
 Ms. Gail Phair-Kirk  
 Ms. Michele Plazeski  
 Ms. Jessica Rickett  
 Ms. Allyson Scheno  
 Smart Shopper, Inc.  
 Ms. Catherine Smith  
 Mr. and Mrs. Norman Weed  
 Mr. and Mrs. Russell Wing  
 Mr. and Mrs. Winthrop Smith  
 Ms. Joan Sorenson  
 Mr. John Waisanen  
 Mr. Harvey Wheeler  
 Ms. Melanie Wright

**CURE BREAST CANCER FOR ME LUNCHEON**

**October 2007 ~ raised \$88,000**

**Pink Ribbon Sponsors ~ \$9,000**

Maine Medical Center  
 Mercy Hospital

**Light of Hope Sponsor ~ \$6,500**

Maine Center for Cancer Medicine

**Compassion ~ \$3,000**

American Cancer Society  
 AstraZeneca  
 Burgess Advertising & Assoc.\*  
 Current Motion\*  
 Direct Mail of Maine\*  
 Headlight\*  
 Maine Switch\*  
 MaineToday.com\*  
 Paradigm Windows\*  
 PenMor\*  
 Port City Life\*  
 Portland Press Herald\*  
 Rosemont Floral\*  
 WJBQ\*  
 Meg Wolff, author of "Becoming Whole: The Story of My Complete Recovery From Breast Cancer"

**Spirit ~ \$1,500**

Glaxo  
 ABC 8 WMTW\*  
 Anthem Blue Cross & Blue Shield ME  
 Baker, Newman & Noyes  
 Genentech  
 Hannaford Bros.  
 Key Bank  
 Maine Biz\*  
 Maine Women's Journal  
 Martin's Point  
 MEMIC

MPX\*  
 Nassau Broadcasting\*  
 Nestle Waters North America  
 Perkins, Thompson, Hinckley & Keddy  
 Pfizer  
 Portland Radio Group\*  
 Preferred Home Builders\*  
 Radiology Specialists of Maine, PA  
 Roche  
 Shipyard Brewing Co.  
 Spectrum Medical Group  
 The Jackson Laboratory  
 Thos. Moser\*  
 Time Warner Cable\*  
 Transformit\*  
 UnumProvident  
 WGME 13\*  
 WGME\*  
 WMTW\*  
 Woodard & Curran, Inc.

**Inspiration ~ \$750**

Air Trans\*  
 Black Cow Photography\*  
 D.Gallant Management  
 Fabu Salon & Day Spa\*  
 Gorham Savings Bank  
 J. Kelley Salon\*  
 Kennebunk Savings Bank  
 Kennebunk Savings Bank  
 Lady Grace  
 Maine Surgical Care  
 Marchese & Associates  
 MGI Pharma  
 Oakhurst Dairy  
 Onyx Pharmaceuticals, Inc.  
 Plastic and Hand  
 Rowe Ford  
 Selby Shoes

**Auction Donors**

A Perfect Smile Dental  
 A Special Place  
 A.G. Edwards & Sons Inc.  
 Agatha & Louise  
 Air Tran  
 Amato's Sandwich Shops, Inc  
 Angela Adams  
 Ann Veronica  
 Architectural Salvage  
 Art for Everyday  
 Back Bay Grill  
 Barber Foods  
 Bay Realty  
 Big Sky Bread Company  
 Blue Heron Art Gallery  
 Bob's Discount Furniture  
 Bruce's Burrito  
 Calm Water Spa  
 Captain Lord Mansion  
 Casco Bay Eye Care

Casco Bay Glass  
 Christina Northrup Inc.  
 Cindi Ressler Photography  
 Clutter to Clarity  
 Company C, Inc.  
 Couleur Collection  
 Cuddledown  
 Cuddledown  
 d. cole  
 David's Restaurant  
 Deb Barry  
 Debrah Yale and Tom Yale  
 DeLorme  
 Donna Estabrooks  
 Douty Brothers  
 Down East Books  
 Dwellings  
 Ed and Beverly Doughty  
 Edgcomb Potters Galleries  
 entrée vous  
 Estabrooks  
 European Bakery, Inc.  
 European Bakery, Inc.  
 Expressly Trends  
 Fabu Salon & Day Spa  
 Falmouth Sea Grill  
 Fastframe/ Elizabeth Moss Gallery  
 Fitness Success Personal Training  
 Flying Change Webs & Graphics  
 Fore Street Restaurant  
 Functional Art & More  
 G.M. Pollack & Sons  
 Galeyrrie  
 General Store for Pets  
 Glen Perry  
 Gorham Massage & Wellness  
 Graeter's Ice Cream  
 Hands On Feet  
 Harvest Hill Farms  
 Helene M  
 Inbija  
 J. Kelley Salon  
 James Harner & Kathleen McKeen  
 Jane Linscott  
 Jeffrey Stevensen Photography  
 Jerry Robinov  
 Jessica Howard/Initially Yours  
 Josh Griffith - Personal Trainer  
 Judith Davis-Woodland Global Travel International  
 Karen Marie Arel  
 Kathleen McKeen and James Harner  
 Lawnmere Inn  
 Lindsay Webber Photographer  
 Lindt  
 Longaberger  
 Lulla Smith  
 Lynda McCann-Olsen  
 Maine Historical Society  
 Maine Lobster and Seafood  
 Maine Medical Center Oncology Program

MainlyMac, Inc.  
 Make Thyme for Dinner  
 Manning Creations  
 Mary E. Oliver  
 Mary Kay Senior Sales Director  
 MedicalSummary.com  
 Meredith Burgess  
 Meredith Burgess  
 Michael Wormwood  
 Mitchell Fernie - Vintage Sign Designer  
 Muffin's Magic  
 Mulberry Downeast Herbs & Dips  
 My Custom Cookies  
 Nance Trueworthy Photography  
 NASCAR  
 Nirvana Skin Wellness Center  
 Nonantum Resort  
 Oakhurst Dairy  
 Old Port Sea Grill  
 Paradigm Windows  
 Peak Performance Multisport & The Bliss Family  
 Peggy's Hallmark  
 Peter Webber  
 Pleasant River Soap Co.  
 Point Sebago Resort  
 Portland Regency Hotel & Spa  
 Preferred Home Builders  
 Preferred Home Builders  
 Print2Digital  
 R.D. Faulkner Corp.  
 Reid William  
 Rosebud Designs  
 Rosemont Floral  
 Rosemont Market  
 Ruth Gorton  
 Sandy Dolan  
 Sarah Arrand, LMT  
 Scarborough Family Chiropractic  
 Seagrass Bistro  
 Sheraton South Portland  
 Shipyard Brewing Co.  
 Simply Chic  
 Skillins Greenhouse  
 Stonewall Kitchen  
 Sugarloaf USA  
 Talbots  
 TD Banknorth  
 The Cliff House  
 The Dirty Moose, Inc.  
 The House of Lights  
 The Prep Kitchen  
 Thos. Moser Cabinetmakers  
 Time Warner Cable Media Sales  
 Visibility  
 Visibility  
 Walter's Café  
 Whimzical Cards  
 Williams Sonoma  
 WJBQ Morning Show  
 Yale Cordage

(\*) signifies an in-kind gift

**PINK TULIP PROJECT**

**October planting, May bloom ~ raised \$59,000**

**Eastern / Northern Maine**

80 Exchange Street Garden, Bangor  
Annie Santerre Memorial Garden, Milbridge  
Bridge to Hope, Houlton  
Charles A. Dean Memorial Hospital, Greenville  
Downtown Bangor Gardens  
Eastern Maine Community College  
Jeannie's Dream Garden, Hulls Cove  
Little City Garden, Bangor  
Margaret Chase Smith Courthouse  
Martin's Point - Evergreen Woods Health Care  
Mattanawcook Academy, Lincoln  
St. Joseph's Healthcare Memorial Park  
University of Maine Orono

**Southern Maine**

Breakwater School, Portland  
Catherine McAuley High School  
Cumberland Center Garden  
Cumberland County Civic Center  
Deanie Stetson Memorial Garden, South Portland  
Deering Oaks

Eastern Prom/ Munjoy Hill  
Federal Courthouse Garden, Portland  
Hospice of Southern Maine  
Lincoln Park/ Ladies in the Law Portland  
Lindquist Funeral Home, Yarmouth  
Long Island Community Garden  
Longfellow Square  
Maine Center for Cancer Medicine  
Maine Medical Center  
Martin's Point  
Mercy Hospital  
Micucci's India Street/ Portland  
Middle School of the Kennebunks  
Peaks Island  
Southern Maine Medical Center, Biddeford  
Trinity Park  
University of Southern Maine Gorham  
University of Southern Maine Portland  
West Street Park/ Freeport Community Gardens  
Western Prom Gardens  
York Community Garden

**Central / Midcoast**

Bates College  
Belfast Garden Club  
Bridge Farm, Dresden

Brunswick/Topsham Swinging Bridge  
Central Maine Medical Center  
Harold Alford Center for Cancer Care, Augusta  
Lewiston City Garden  
Lewiston City Garden  
Lincoln Circle Planter  
Martin's Point Brunswick Health Care Center  
Mayher Park  
MMC Coastal Cancer Center, Bath  
St Mary's Medical Center/ Lewiston  
Topsham Community Garden  
Veterans Park  
Waldoboro Garden Club

**07 HIKE THE RIVER FOR A CURE**

**October 2007 ~ raised \$5,638**

**SACO BAY PT 5K**

**October 2007 ~ raised \$9,007**

**Sponsors & Friends**

Acadia Benefits, Inc  
Ann Babbitt, M.D.  
Carrie Bush  
Dawson Smith Purvis & Bassett  
Dow & Coulombe, Inc  
HP Hood LLC  
Maine Orthopaedic Center

Marston's Marina  
Mary Jane Cook  
Nichols & Webb, P.A.  
OrthoEast, Inc.  
Orthopedic Surgery Associates  
Peg Poulin Horton Insurance Agency  
Remmes Orthodontics, P. A.  
Saco & Biddeford Savings Charitable Foundation  
Saco Bay Orthopaedic and Sports Physical Therapy  
Southern Maine Emergency Medical Services

**WJBQ CANS FOR A CURE**

**October 2007 ~ raised \$5,945**

*Every effort has been made to insure that this list is accurate. We apologize for any errors or omissions. Please call the office with any corrections, 773-2533*

**Gift Recognition Program**

The recognition program is designed to provide much deserved recognition for those who support the Foundation and to foster a loyal pattern of charitable giving

**\$1 - \$99 Friends Club** To honor the power of friendship to a person living with cancer

**\$100 - \$249 Courage Circle** To acknowledge extraordinary determination exhibited by cancer patients

**\$250 - \$499 Promise Club** To celebrate the promise of a cancer free future

**\$500 - \$999 Carroll Society** To honor the steadfast leadership of Dr. Ron Carroll, long time board member and past president

**\$1,000 - \$2,499 2nd Century Club** To encourage life saving advances in the second millennium

**\$2,500 - \$4,999 Society of Hope** To celebrate the hopefulness that all donors embrace

**\$5,000 plus 1976 Club** To honor the determination of the founders who, in 1976, after experiencing heartbreaking losses to cancer, established the Foundation in order to make a difference for the people of Maine.

**Your Support is the Foundation of Our Success**

Please Print

Name \_\_\_\_\_

Address \_\_\_\_\_

City \_\_\_\_\_ State \_\_\_\_\_ Zip \_\_\_\_\_ Phone \_\_\_\_\_

Enclosed is my gift of \$ \_\_\_\_\_, payable to *Maine Cancer Foundation*

Please charge \$ \_\_\_\_\_ to my:  Visa  MasterCard  American Express

Card No. \_\_\_\_\_ Expiration \_\_\_\_\_

Signature \_\_\_\_\_

Please mail to: Maine Cancer Foundation • P.O. Box 553 • Portland, ME 04112



P.O. Box 553 DTS  
 Portland, ME 04112-0553

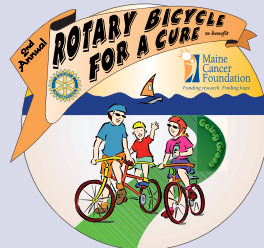
**NONPROFIT ORGANIZATION**  
**U.S. POSTAGE**  
**PAID**  
**PORTLAND, ME**  
**PERMIT NO. 216**

**Upcoming Fall Events**

**Saco Bay PT 5K**  
**September 27**



**Rotary Bicycle For A Cure**  
**September 28**



**Cure Breast Cancer for ME Luncheon**  
**October 1**  
**On-Line Auction**  
**October 1 – 30**



**Susan Rowan**, Executive Director  
 susan@mainecancer.org

**Joanne Jordan**, Special Event/Community Relations Manager  
 joanne@mainecancer.org

**Kelly Martin**, Administrative Associate  
 kelly@mainecancer.org

**Andrea Wedge**, Special Event Assistant  
 andrea@mainecancer.org